

 *Lighting*  
**PETRIDIS**

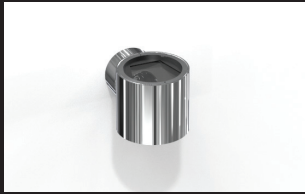
**OUTDOOR**



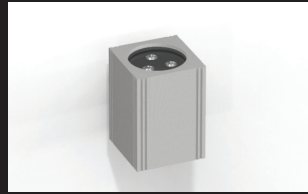




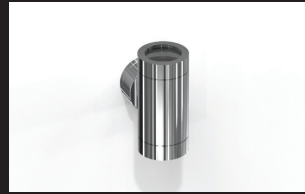




4 BEAM 1 -  
BEAM 2 IP65



8 BEAM 3 -  
BEAM 4 LED



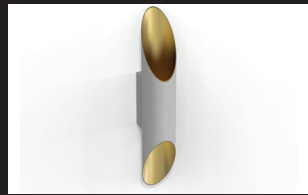
12 BEAM 5 -  
BEAM 6 IP65



16 BEAM 5 -  
BEAM 6 LED  
IP65



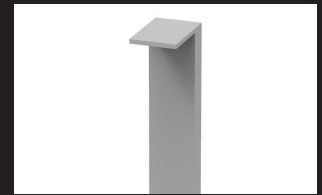
32 AVIA LED IP65



34 EKALI IP65



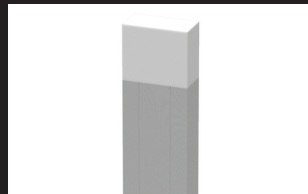
36 ROLLER



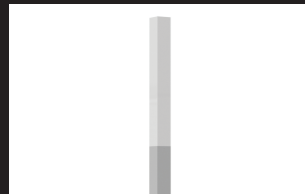
38 GEA GROUND



54 SKAT 7 LED



56 SKAT 10



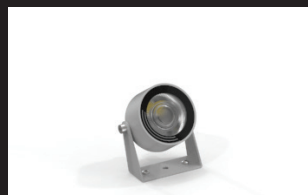
60 SKAT 8



62 SKAT 9



74 LITHOS



80 PEGASUS



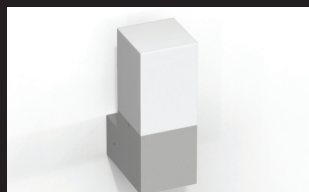
82 FOCUS



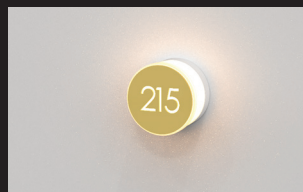
86 AGIS LED



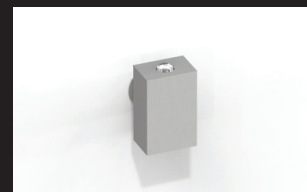
20 BEAM 7 LED  
IP65



24 SKAT  
Applique



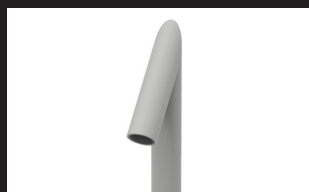
28 BUTTON LED  
IP54



29 PICO LED IP54



40 FIVI GROUND



42 PYROS



46 KRITON



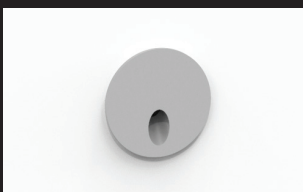
48 SKAT



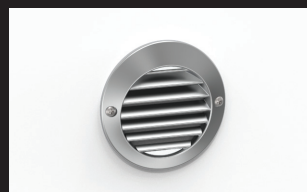
63 MEGA SKAT



64 POINT



66 MIRTO /  
MIRTO 230



70 TYCO



88 SLIM 3 LED



92 SLIM 3 LED  
GROUND

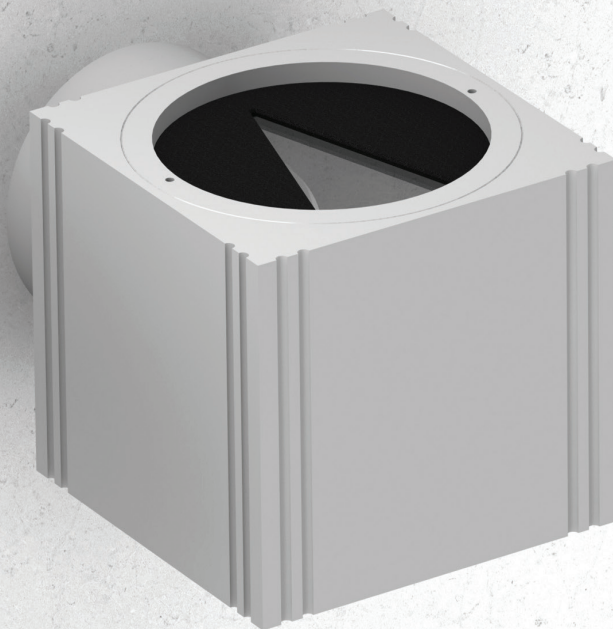


96 LED LIGHT



100 ARSIS

## BEAM 1 - BEAM 2 IP65



Surface wall mounted luminaire with halogen or fluorescent lamps. It is ideal for a wide range of outdoor applications due to its high protection degree IP65. Available with one or two-way light distribution and with different beam angles.

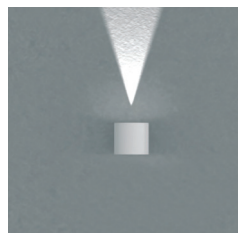
### Technical Features

- Aluminium body, painted electrostatically in selected colour.
- Die-cast aluminium lampholder - mounting base.
- Tempered protection glass.
- Silicone sealant.
- Beam-angle configuration diaphragm made of aluminium.

### Upon request

Special beam editions.

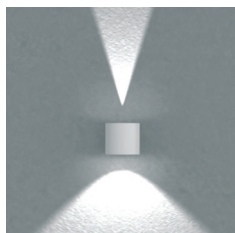
### Versions



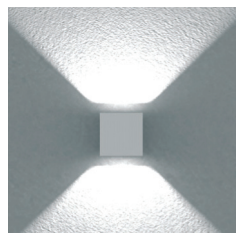
**BEAM 1 - ONE WAY**  
40°



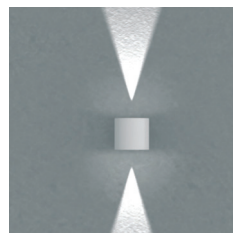
**BEAM 2 - ONE WAY**  
100°



**BEAM 1 - TWO WAY**  
40° / 100°



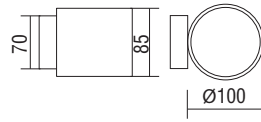
**BEAM 2 - TWO WAY**  
100° / 100°



**BEAM 1 - TWO WAY**  
40° / 40°

# BEAM 1 - BEAM 2 IP65

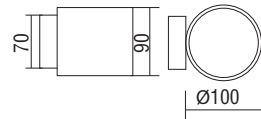
## BEAM 1 - ONE WAY



- For QT 14/G9 lamp.
- Aluminium body.

Code	Description	Kg
85727	BEAM1 - ONE WAY G9 40°	0,950
85728	BEAM1 - ONE WAY G9 100°	0,950

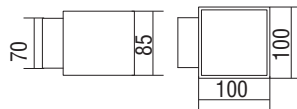
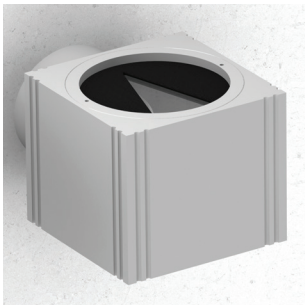
## BEAM 1 - TWO WAY



- For QT 14/G9 lamp.
- Aluminium body.

Code	Description	Kg
85721	BEAM1 - TWO WAY G9 40° / 100°	0,950
85722	BEAM1 - TWO WAY G9 100° / 100°	0,950
85723	BEAM1 - TWO WAY G9 40° / 40°	0,950

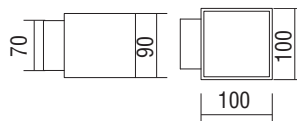
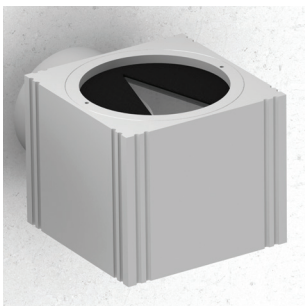
## BEAM 2 - ONE WAY



- For QT 14/G9 lamp.
- Aluminium body.

Code	Description	Kg
85729	BEAM2 - ONE WAY G9 40°	1,500
85730	BEAM2 - ONE WAY G9 100°	1,500

## BEAM 2 - TWO WAY



- For QT 14/G9 lamp.
- Aluminium body.

Code	Description	Kg
85724	BEAM2 - TWO WAY G9 40° / 100°	1,500
85725	BEAM2 - TWO WAY G9 100° / 100°	1,500
85726	BEAM2 - TWO WAY G9 40° / 40°	1,500

**Colour Codes:**

- 0 Colours 1 White 2 Titan 3 Black 4 Chrome



# BEAM 1 - BEAM 2 IP65





# BEAM 1 - BEAM 2 IP65





## BEAM 3 - BEAM 4 LED



*Surface wall mounted luminaire with power LED chip.  
It is ideal for a wide range of outdoor applications due to its high protection degree IP65.  
Available with one or two-way light distribution and with different beam angles.*

### Technical Features

- Aluminium body, painted electrostatically in selected colour.
- Mounting base from die-cast aluminium.
- Tempered protection glass.
- Beam distribution lens.
- Silicone sealant.
- Pure light without IR/UV radiation.
- Operation life: 50,000 hours with efficiency > 80% of the initial luminous flux (L80B10).

### Upon request:

Available with highest colour rendering index (CRI)



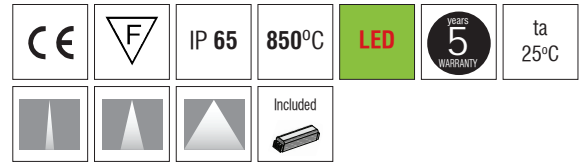
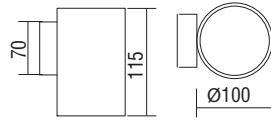
H07RN-F

To ensure the degree of protection (sealing), the use of flexible power supply cable type H07RN-F is required.



# BEAM 3 - BEAM 4 LED

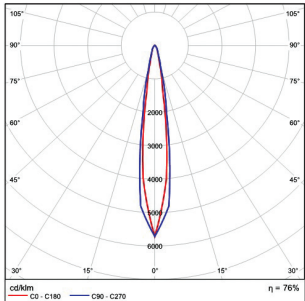
## BEAM 3 - ONE WAY



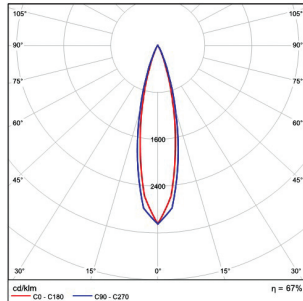
- Beams: Spot, Medium, Wide.
- 3x1W power consumption driven at 350mA.
- 3x2W power consumption driven at 500mA.
- CRI: min. 80 / SCDM: 3
- Luminous Efficacy:
  - 3x1W: 4000 K: 164 Lm/Watt
  - 3x1W: 3000 K: 154 Lm/Watt
  - 3x2W: 4000 K: 113 Lm/Watt
  - 3x2W: 3000 K: 106 Lm/Watt

Code	Description	Kg
85731	BEAM3 ONE WAY 3 LED x 1W (Integrated Control Gear)	1,600
85732	BEAM3 ONE WAY 3 LED x 2W (Integrated Control Gear)	1,600

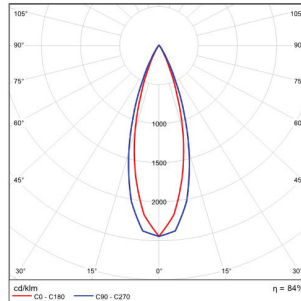
### SPOT



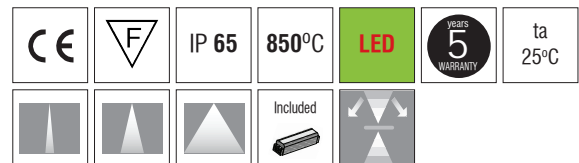
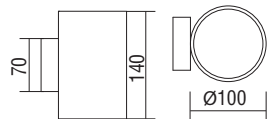
### MEDIUM



### WIDE



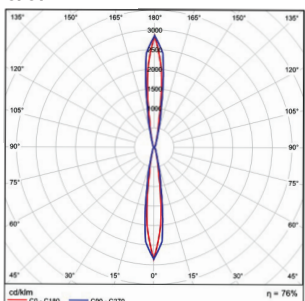
## BEAM 3 - TWO WAY



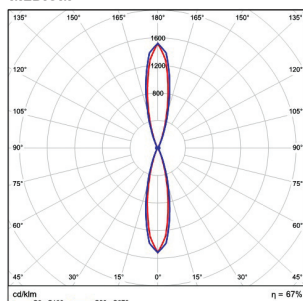
- Beams: Spot, Medium, Wide.
- 6x1W power consumption driven at 350mA.
- 6x2W power consumption driven at 500mA.
- CRI: min. 80 / SCDM: 3
- Luminous Efficacy:
  - 3+3x1W: 4000 K: 164+164 Lm/Watt
  - 3+3x1W: 3000 K: 159+159 Lm/Watt
  - 3+3x2W: 4000 K: 113+113 Lm/Watt
  - 3+3x2W: 3000 K: 106+106 Lm/Watt

Code	Description	Kg
85736	BEAM3 3+3 LED x 1W (Integrated Control Gear)	2,000
85737	BEAM3 3+3 LED x 2W (Integrated Control Gear)	2,000

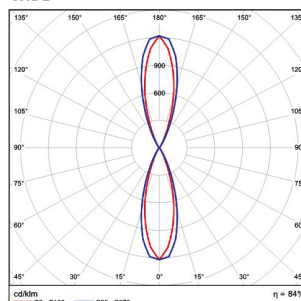
### SPOT



### MEDIUM

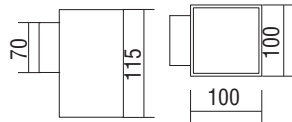


### WIDE



# BEAM 3 - BEAM 4 LED

## BEAM 4 - ONE WAY

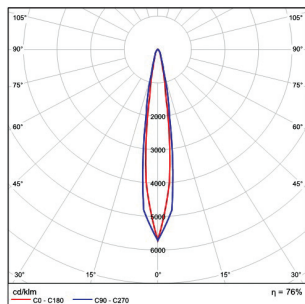


		IP 65	850°C	LED	5 years WARRANTY	ta 25°C
			Included			

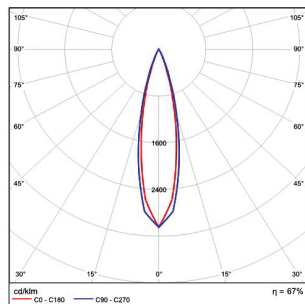
- Beams: Spot, Medium, Wide.
- 3x1W power consumption driven at 350mA.
- 3x2W power consumption driven at 500mA.
- CRI: min. 80 / SCDM: 3
- Luminous Efficacy:
  - 3x1W: 4000 K: 164 Lm/Watt
  - 3x1W: 3000 K: 154 Lm/Watt
  - 3x2W: 4000 K: 113 Lm/Watt
  - 3x2W: 3000 K: 106 Lm/Watt

Code	Description	Kg
85741	BEAM4 ONE WAY 3 LED x 1W (Integrated Control Gear)	2,500
85742	BEAM4 ONE WAY 3 LED x 2W (Integrated Control Gear)	2,500

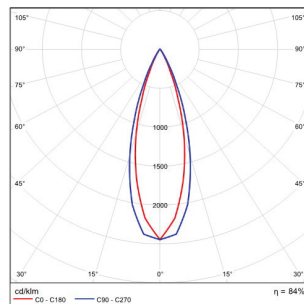
### SPOT



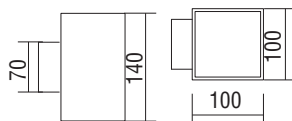
### MEDIUM



### WIDE



## BEAM 4 - TWO WAY

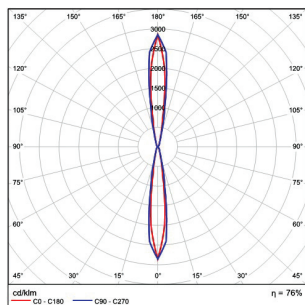


		IP 65	850°C	LED	5 years WARRANTY	ta 25°C
			Included			

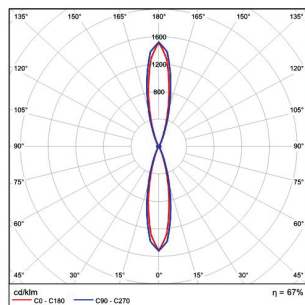
- Beams: Spot, Medium, Wide.
- 6x1W power consumption driven at 350mA.
- 6x2W power consumption driven at 500mA.
- CRI: min. 80 / SCDM: 3
- Luminous Efficacy:
  - 3+3x1W: 4000 K: 164+164 Lm/Watt
  - 3+3x1W: 3000 K: 159+159 Lm/Watt
  - 3+3x2W: 4000 K: 113+113 Lm/Watt
  - 3+3x2W: 3000 K: 106+106 Lm/Watt

Code	Description	Kg
85746	BEAM4 3+3 LED x 1W (Integrated Control Gear)	2,900
85747	BEAM4 3+3 LED x 2W (Integrated Control Gear)	2,900

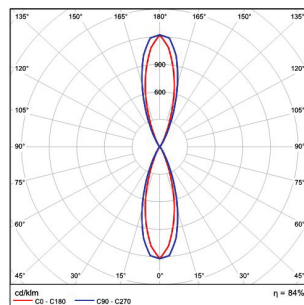
### SPOT



### MEDIUM



### WIDE



#### LED COLOUR CODES:

**2** Warm **3** Neutral

#### Beams Codes:

**10** spot/spot **30** medium/medium **45** wide/wide **90** spot/medium **91** spot/wide **92** medium/wide

#### Colour Codes:

**0** Colours **1** White **2** Titan **3** Black **4** Chrome **5** matt Alum.



# BEAM 3 - BEAM 4 LED



## BEAM 5 - BEAM 6 IP65



*Surface wall mounted luminaire with halogen or led lamp.  
It is ideal for a wide range of outdoor applications due to it's high  
protection degree IP65.  
Available with one or two-way light distribution.*

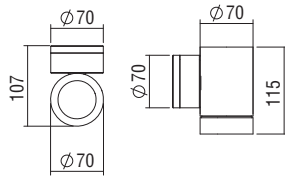
### **Technical Features**

- Aluminium body, painted electrostatically in selected colour.
- Die-cast aluminium lampholder - mounting base.
- Tempered protection glass.
- Silicone sealant.



# BEAM 5 - BEAM 6 IP65

## BEAM 5 - ONE WAY

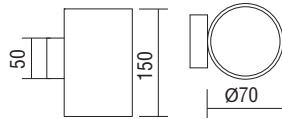


CE	F	IP 65	850°C	LED	LED Lamp
----	---	-------	-------	-----	----------

- For PAR 16/GU10 lamp.
- Aluminium body.

Code	Description	Kg
85754	BEAM5 1x50W PAR16 (LED, FLUO) / GU10	0,530

## BEAM 5 - TWO WAY

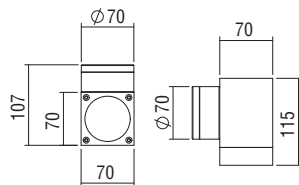
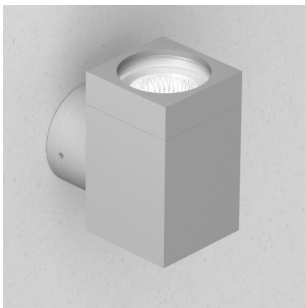


CE	F	IP 65	850°C	LED	LED Lamp	Two Way
----	---	-------	-------	-----	----------	---------

- For PAR 16/GU10 lamp.
- Aluminium body.

Code	Description	Kg
85755	BEAM5 2x50W PAR16 (LED, FLUO) / GU10	0,530

## BEAM 6 - ONE WAY

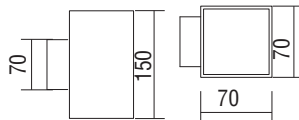


CE	F	IP 65	850°C	LED	LED Lamp
----	---	-------	-------	-----	----------

- For PAR 16/GU10 lamp.
- Aluminium body.

Code	Description	Kg
85769	BEAM6 1x50W PAR16 (LED, FLUO) / GU10	0,920

## BEAM 6 - TWO WAY



CE	F	IP 65	850°C	LED	LED Lamp	Two Way
----	---	-------	-------	-----	----------	---------

- For PAR 16/GU10 lamp.
- Aluminium body.

Code	Description	Kg
85768	BEAM6 2x50W PAR16 (LED, FLUO) / GU10	0,920

**Colour Codes:**

- 0 Colours   1 White   2 Titan   3 Black   4 Chrome



## BEAM 5 - BEAM 6 IP65





# BEAM 5 - BEAM 6 IP65





## BEAM 5 - BEAM 6 LED IP65



*Surface wall mounted luminaire with power LED chip.  
It is ideal for a wide range of outdoor applications due to its high protection degree IP65. Available with one or two-way light distribution and with different beam angles.*

### Technical Features

- Aluminium body, painted electrostatically in selected colour.
- Mounting base from die-cast aluminium.
- Tempered protection glass.
- Beam distribution lens.
- Silicone sealant.
- Pure light without IR/UV radiation.
- Operation life: 50,000 hours with efficiency > 80% of the initial luminous flux (L80B10).

### Upon request:

Available with highest colour rendering index (CRI)



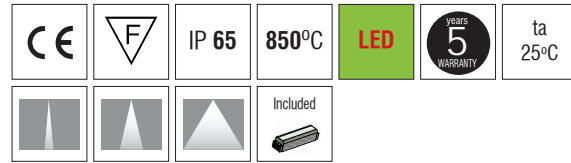
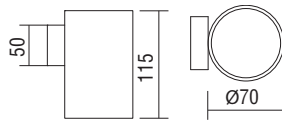
H07RN-F

To ensure the degree of protection (sealing), the use of flexible power supply cable type H07RN-F is required.



# BEAM 5 - BEAM 6 LED IP65

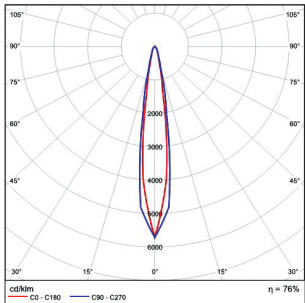
## BEAM 5 - ONE WAY



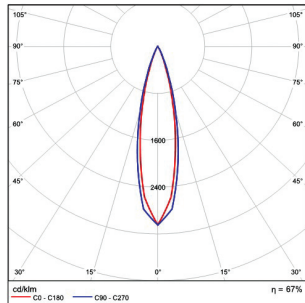
- Beams: Spot, Medium, Wide.
- 3x1W power consumption driven at 350mA.
- 3x2W power consumption driven at 500mA.
- CRI: min. 80 / SCDM: 3
- Luminous Efficacy:
  - 3x1W: 4000 K: 164 Lm/Watt
  - 3x1W: 3000 K: 154 Lm/Watt
  - 3x2W: 4000 K: 113 Lm/Watt
  - 3x2W: 3000 K: 106 Lm/Watt

Code	Description	Kg
85751	BEAM5 ONE WAY 3 LED x 1W (Integrated Control Gear)	0,700
85752	BEAM5 ONE WAY 3 LED x 2W (Integrated Control Gear)	0,700

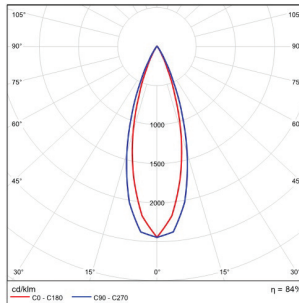
### SPOT



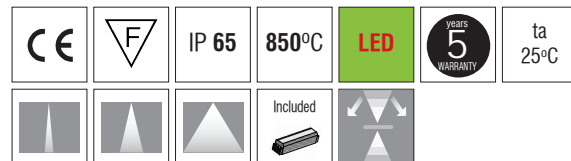
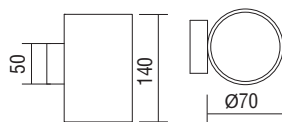
### MEDIUM



### WIDE



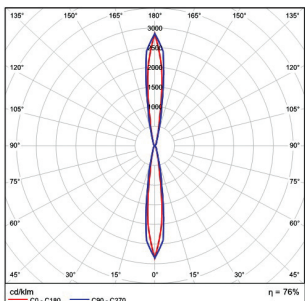
## BEAM 5 - TWO WAY



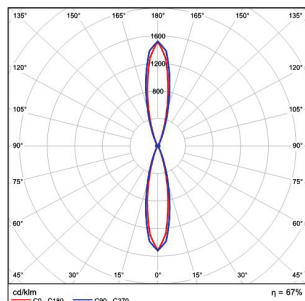
- Beams: Spot, Medium, Wide.
- 6x1W power consumption driven at 350mA.
- 6x2W power consumption driven at 500mA.
- CRI: min. 80 / SCDM: 3
- Luminous Efficacy:
  - 3+3x1W: 4000 K: 164+164 Lm/Watt
  - 3+3x1W: 3000 K: 159+159 Lm/Watt
  - 3+3x2W: 4000 K: 113+113 Lm/Watt
  - 3+3x2W: 3000 K: 106+106 Lm/Watt

Code	Description	Kg
85756	BEAM5 TWO WAY 3+3LED x1W (Integrated Control Gear)	1,000
85757	BEAM5 TWO WAY 3+3LED x2W (Integrated Control Gear)	1,000

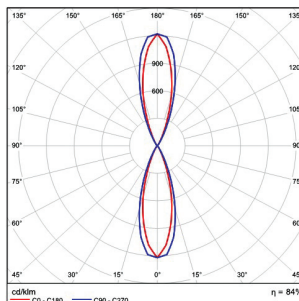
### SPOT



### MEDIUM

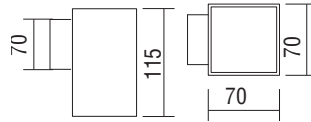


### WIDE



# BEAM 5 - BEAM 6 LED IP65

## BEAM 6 - ONE WAY

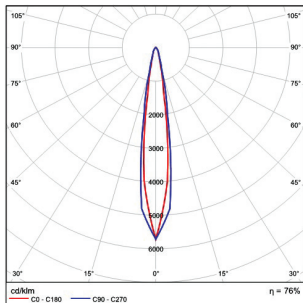


CE	F	IP 65	850°C	LED	5 YEARS WARRANTY	ta 25°C
			Included			

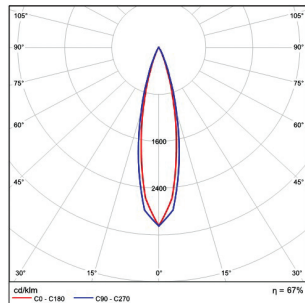
- Beams: Spot, Medium, Wide.
- 3x1W power consumption driven at 350mA.
- 3x2W power consumption driven at 500mA.
- CRI: min. 80 / SCDM: 3
- Luminous Efficacy:
  - 3x1W: 4000 K: 164 Lm/Watt
  - 3x1W: 3000 K: 154 Lm/Watt
  - 3x2W: 4000 K: 113 Lm/Watt
  - 3x2W: 3000 K: 106 Lm/Watt

Code	Description	Kg
85761	BEAM6 ONE WAY 3 LED x 1W (Integrated Control Gear)	1,200
85762	BEAM6 ONE WAY 3 LED x 2W (Integrated Control Gear)	1,200

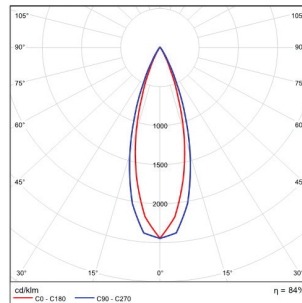
### SPOT



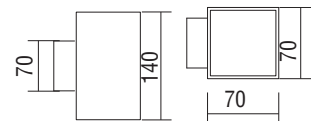
### MEDIUM



### WIDE



## BEAM 6 - TWO WAY

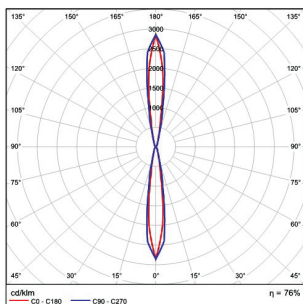


CE	F	IP 65	850°C	LED	5 YEARS WARRANTY	ta 25°C
			Included			

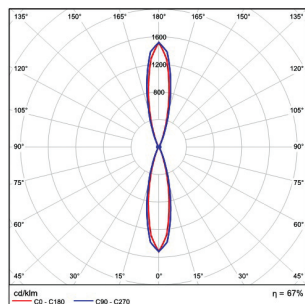
- Beams: Spot, Medium, Wide.
- 6x1W power consumption driven at 350mA.
- 6x2W power consumption driven at 500mA.
- CRI: min. 80 / SCDM: 3
- Luminous Efficacy:
  - 3+3x1W: 4000 K: 164+164 Lm/Watt
  - 3+3x1W: 3000 K: 159+159 Lm/Watt
  - 3+3x2W: 4000 K: 113+113 Lm/Watt
  - 3+3x2W: 3000 K: 106+106 Lm/Watt

Code	Description	Kg
85766	BEAM6 TWO WAY 3+3LED x1W (Integrated Control Gear)	1,500
85767	BEAM6 TWO WAY 3+3LED x2W (Integrated Control Gear)	1,500

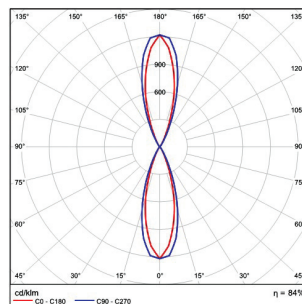
### SPOT



### MEDIUM



### WIDE



#### LED COLOUR CODES:

2 Warm 3 Neutral

#### Beams Codes:

10 spot/spot 30 medium/medium 45 wide/wide 90 spot/medium 91 spot/wide 92 medium/wide

#### Colour Codes:

0 Colours 1 White 2 Titan 3 Black 4 Chrome 5 matt Alum.



# BEAM 5 - BEAM 6 LED IP65





## BEAM 7 LED IP65



*Surface wall mounted luminaire with power LED chip.  
It is ideal for a wide range of outdoor applications  
due to its high protection degree IP65.  
Available with one or two-way light distribution  
and with different beam angles.*

### Technical Features

- Aluminium body, painted electrostatically in selected colour.
- Mounting base from die-cast aluminium.
- Tempered protection glass.
- Beam distribution lens.
- Silicone sealant.
- Pure light without IR/UV radiation.
- Operation life: 50,000 hours with efficiency > 80% of the initial luminous flux (L80B10).

### Upon request:

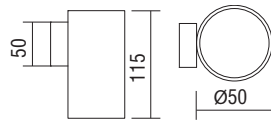
Available with highest colour rendering index (CRI)



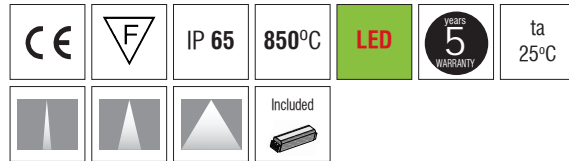
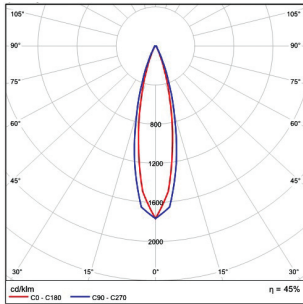
**H07RN-F** To ensure the degree of protection (sealing), the use of flexible power supply cable type H07RN-F is required.

# BEAM 7 LED IP65

## BEAM 7 - ONE WAY



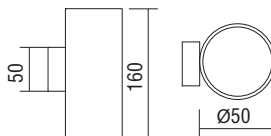
### MEDIUM



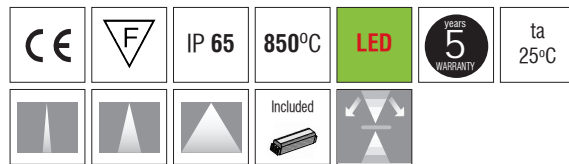
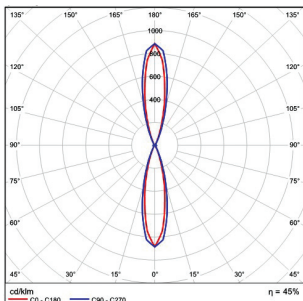
- Beams: Spot, Medium, Wide.
- 1x1W power consumption driven at 350mA.
- 1x2W power consumption driven at 500mA.
- CRI: min. 80 / SCDM: 3
- Luminous Efficacy:
  - 1x1W: 4000 K: 164 Lm/Watt
  - 1x1W: 3000 K: 154 Lm/Watt
  - 1x2W: 4000 K: 113 Lm/Watt
  - 1x2W: 3000 K: 106 Lm/Watt

Code	Description	Kg
85770	BEAM7 ONE WAY 1 LED x 1W (Integrated Control Gear)	0,500
85771	BEAM7 ONE WAY 1 LED x 2W (Integrated Control Gear)	0,500

## BEAM 7 - TWO WAY



### MEDIUM



- Beams: Spot, Medium, Wide.
- 2x1W power consumption driven at 350mA.
- 2x2W power consumption driven at 500mA.
- CRI: min. 80 / SCDM: 3
- Luminous Efficacy:
  - 1+1x1W: 4000 K: 164+164 Lm/Watt
  - 1+1x1W: 3000 K: 154+154 Lm/Watt
  - 1+1x2W: 4000 K: 113+113 Lm/Watt
  - 1+1x2W: 3000 K: 106+106 Lm/Watt

Code	Description	Kg
85776	BEAM7 TWO WAY 1+1 LED x 1W (Integrated Control Gear)	0,650
85777	BEAM7 TWO WAY 1+1 LED x 2W (Integrated Control Gear)	0,650

LED COLOUR CODES:	Beams Codes:
<span style="border: 1px solid black; padding: 2px;">2</span> Warm <span style="border: 1px solid black; padding: 2px;">3</span> Neutral	<span style="border: 1px solid black; padding: 2px;">10</span> spot/spot <span style="border: 1px solid black; padding: 2px;">30</span> medium/medium <span style="border: 1px solid black; padding: 2px;">45</span> wide/wide <span style="border: 1px solid black; padding: 2px;">90</span> spot/medium <span style="border: 1px solid black; padding: 2px;">91</span> spot/wide <span style="border: 1px solid black; padding: 2px;">92</span> medium/wide

Colour Codes:
<span style="border: 1px solid black; padding: 2px;">0</span> Colours <span style="border: 1px solid black; padding: 2px;">1</span> White <span style="border: 1px solid black; padding: 2px;">2</span> Titan <span style="border: 1px solid black; padding: 2px;">3</span> Black <span style="border: 1px solid black; padding: 2px;">4</span> Chrome <span style="border: 1px solid black; padding: 2px;">5</span> matt Alum.



# BEAM 7 LED IP65





# BEAM 7 LED IP65





## SKAT Applique



*A modern surface wall mounted luminaire with LED source.  
It is ideal for home outdoor lighting.*

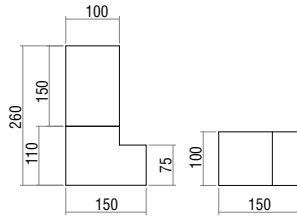
### **Technical Features**

- Aluminium body, painted electrostatically in selected colour.
- Die-cast aluminium mounting base.
- Diffuser from high efficiency opal PMMA.
- Pure light without IR/UV radiation.
- Operation life: 50,000 hours with efficiency > 80% of the initial luminous flux (L80B10).



# SKAT Applique

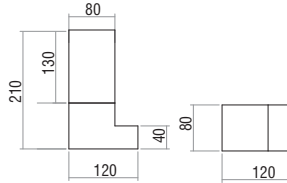
**SKAT 3 Applique L**



- Diffuser made of acrylic satine.

Code	Description
84330	Height 26cm 1x max.14W TC-TSE / E27

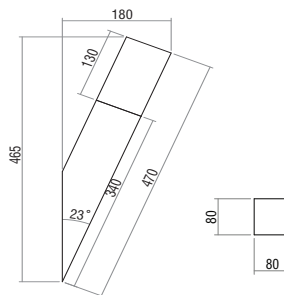
**SKAT 4 Applique L**



- Diffuser made of acrylic satine.

Code	Description
84340	Height 21cm 1x max.14W TC-TSE / E27

**SKAT 5 Applique**

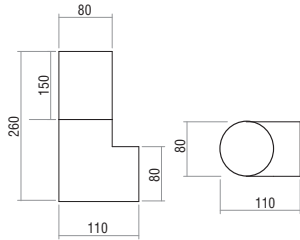


- Diffuser made of acrylic satine.

Code	Description
84350	Height 46,5cm 1x max.14W TC-TSE / E27

# SKAT Applique

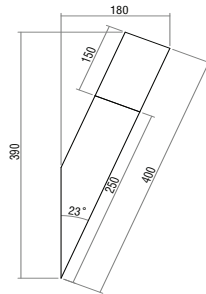
## SKAT 6 Applique L



- Diffuser made of acrylic satine.

Code	Description
84359	Height 26cm 1x max.14W TC-TSE / E27

## SKAT 6 Applique

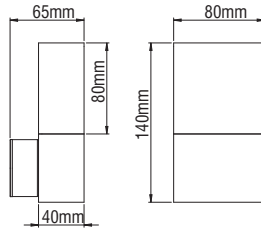
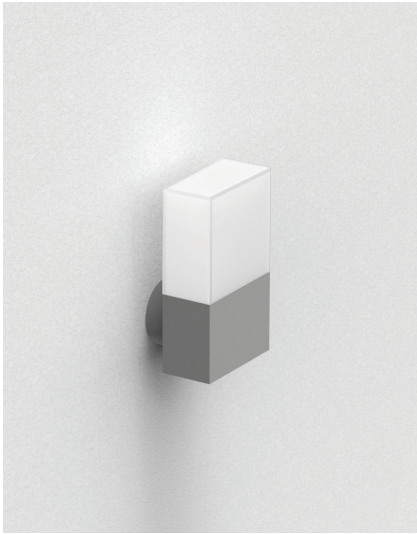


- Diffuser made of acrylic satine.

Code	Description
84360	Height 40cm 1x max.14W TC-TSE / E27

# SKAT Applique

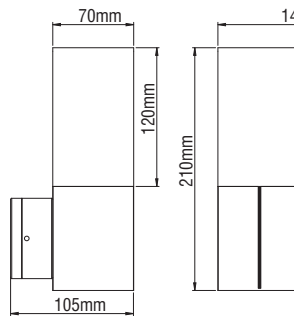
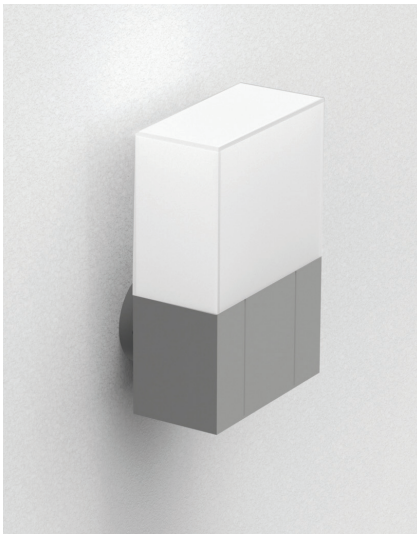
## SKAT 10 Small



- For Led chip.
- Aluminium body.
- Opal PMMA cover.
- 230V/50Hz.
- CRI: min. 80 / SCDM: 3
- Luminous Efficacy:  
100 Lm/Watt at 4000K  
94 Lm/Watt at 3000K

Code	Description
84440	Skat 10 Applique Small 1x4W Warm
84441	Skat 10 Applique Small 1x4W Neutral

## SKAT 10 Big



- For Led chip.
- Aluminium body.
- Opal PMMA cover.
- 230V/50Hz.
- Dimmer Phase Cut.
- CRI: min. 80 / SCDM: 3
- Luminous Efficacy:  
95 Lm/Watt at 4000K  
90 Lm/Watt at 3000K

Code	Description
84442	Skat 10 Applique Big 2x4W Warm
84443	Skat 10 Applique Big 2x4W Neutral

**Colour Codes:**

- 0 Colours   1 White   2 Titan   3 Black

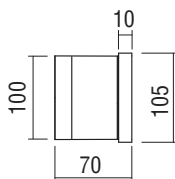
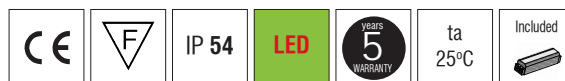
## BUTTON LED IP54



*A circular surface wall mounted luminaire with LED source.  
It is ideal for home facade lighting.*

### Technical Features

- Aluminium body, painted electrostatically in selected colour.
- PMMA opal diffuser.
- Pure light without IR/UV radiation.
- Operation life: 50,000 hours with efficiency > 80% of the initial luminous flux (L70B50).



- Aluminium body.
- PMMA diffuser.
- CRI: min. 80 / SCDM: 3
- Luminous Efficacy:  
4W 4000K 95Lm/W  
4W 3000K 90Lm/W

Code	Description	Kg
85898	BUTTON 4W Warm IP54	0,400
85899	BUTTON 4W Neutral IP54	0,400
805805	BUTTON Accessory (alum.number)*	0,005

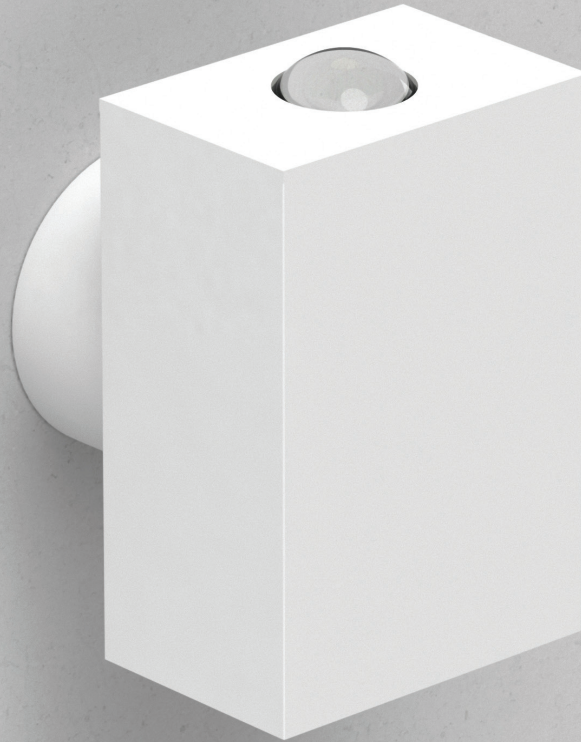
\* Please order the BUTTON accessory separate if it is needed

#### Colour Codes:

0 Colours 1 White 2 Titan 3 Black 4 Chrome 5 matt Alum.



# PICO LED IP54

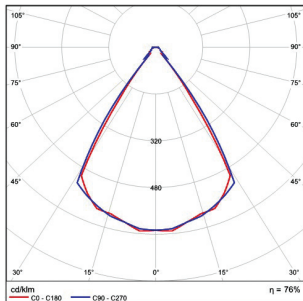


A tiny surface wall mounted luminaire with LED source.  
It is ideal for home facade lighting  
and it is available with one or two-way light distribution.

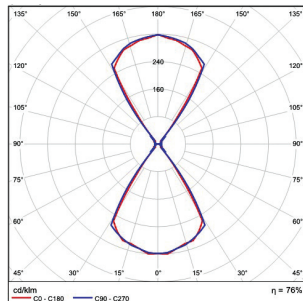
## Technical Features

- Aluminium body, painted electrostatically in selected colour.
- Die-cast aluminium mounting base.
- Beam distribution glass lens.
- Pure light without IR/UV radiation.
- Operation life: 50,000 hours with efficiency > 80% of the initial luminous flux (L80B10).

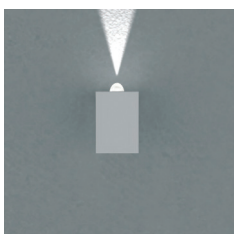
### ONE WAY



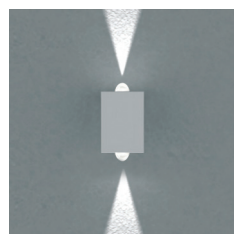
### TWO WAY



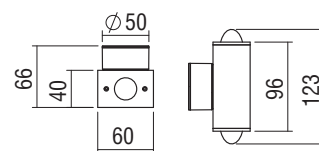
## Versions



**PICO LED 1W**  
ONE WAY  
120°



**PICO LED 1+1W**  
TWO WAY  
120° / 120°



- Beams: Wide.
- Aluminium body.
- Glass lens.
- CRI: min. 80 / SCDM: 3
- Luminous Efficacy:  
164 Lm/Watt at 4000K 350mA  
154 Lm/Watt at 3000K 350mA

Code	Description	Kg
85820	PICO ONE WAY 1x1W	0,250
85821	PICO TWO WAY 2x1W	0,300

LED COLOUR CODES:	Beams Codes:	Colour Codes:
2 Warm 3 Neutral	03 Wide	0 Colours 1 White 2 Titan 3 Black 4 Chrome 5 matt Alum.



# PICO LED IP54





# PICO LED IP54





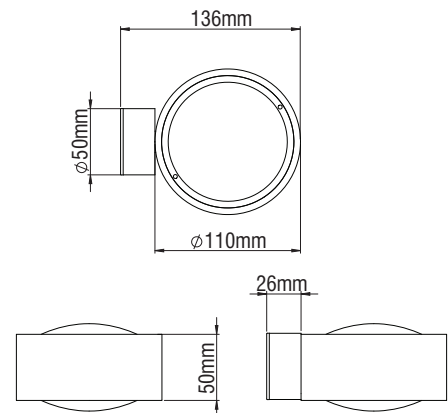
# AVIA LED IP65



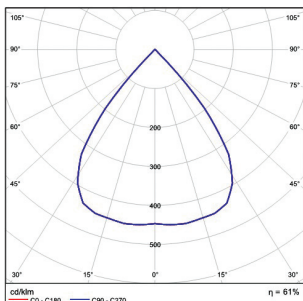
A modern surface wall mounted luminaire with LED source.  
It is ideal for home facade lighting and it is available with one or two-way light distribution.

## Technical Features

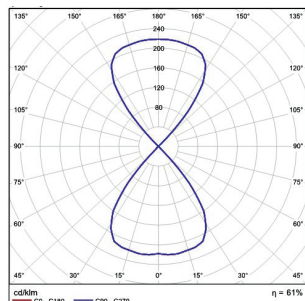
- Aluminium body, painted electrostatically in selected colour.
- Die-cast aluminium mounting base.
- Beam distribution glass lens.
- Pure light without IR/UV radiation.
- Operation life: 50,000 hours with efficiency > 80% of the initial luminous flux (L80B10).



ONE WAY



TWO WAY



- Beams: Diffuser.
- Aluminium body.
- Glass lens.
- CRI: min. 80 / SCDM: 3
- Dimmer phase cut.
- Luminous Efficacy:  
4W: 4000K 92 Lm/Watt  
4W: 3000K 88 Lm/Watt

Code	Description	Kg
85842	AVIA ONE WAY 1x4W	1,000
85843	AVIA TWO WAY 2x4W	1,000

### LED COLOUR CODES:

2 Warm 3 Neutral

### Beams Codes:

00 Diffuser

### Colour Codes:

0 Colours 1 White 2 Titan 3 Black 4 Chrome 5 matt Alum.



# AVIA LED IP65





## EKALI IP65



Surface wall mounted luminaire with power LED chip or LED Lamp GU10 PA16.

It is ideal for a wide range of outdoor applications due to its high protection degree IP65. Available with one or two-way light distribution.

### Technical Features

- Aluminium body, painted electrostatically in selected colour.
- Mounting base from die-cast aluminium.
- Tempered protection glass.
- Silicone sealant.
- Pure light without IR/UV radiation.
- Operation life: 50,000 hours with efficiency > 80% of the initial luminous flux (L80B10).

### Upon request:

Available with highest colour rendering index (CRI)

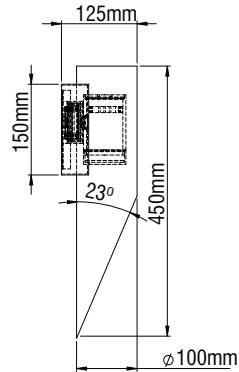


To ensure the degree of protection (sealing), the use of flexible power supply cable type H07RN-F is required.



# EKALI IP65

## EKALI IP65 ONE WAY

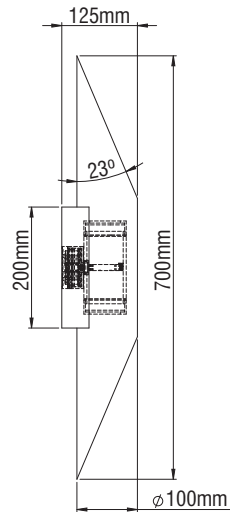


CE	F	IP 65	850°C	LED	5 YEARS WARRANTY	ta 25°C	Included
----	---	-------	-------	-----	------------------	---------	----------

- Version with LED CHIP or Lamp GU10 LED PAR16.
- 6W power consumption driven at 500mA.
- CRI: min. 80 / SCDM: 3
- CRI: min. 80 / SCDM: 3
- Luminous Efficacy:
  - 6W: 4000 K: 113 Lm/Watt
  - 6W: 3000 K: 106 Lm/Watt

Code	Description	Kg
85882	EKALI ONE WAY GU10 IP65	0,900
85878	EKALI LED ONE WAY 6W IP65 Warm (Integrated Control Gear)	0,900
85879	EKALI LED ONE WAY 6W IP65 Neutral (Integrated Control Gear)	0,900

## EKALI LED IP65 TWO WAY



CE	F	IP 65	850°C	LED	5 YEARS WARRANTY	ta 25°C
Included						

- Version with LED CHIP or Lamp GU10 LED PAR16.
- 6W power consumption driven at 500mA.
- CRI: min. 80 / SCDM: 3
- CRI: min. 80 / SCDM: 3
- Luminous Efficacy:
  - 6W+6W: 4000 K: 113 Lm/Watt
  - 6W+6W: 3000 K: 106 Lm/Watt

Code	Description	Kg
85883	EKALI TWO WAY 2xGU10 IP65	1,000
85880	EKALI LED TWO WAY 6W+6W IP65 Warm (Integrated Control Gear)	1,000
85881	EKALI LED TWO WAY 6W+6W IP65 Neutral (Integrated Control Gear)	1,000

**Colour Codes:**

0	Colours	1	White	2	Titan	3	Black	6	Anthracite
---	---------	---	-------	---	-------	---	-------	---	------------

## ROLLER



*Roller is surface mounted or suspended luminaire with cylindrical shape.*

*It can be produced with different heights upon request.*

*Due to it's high protection degree (IP54 and IP65)*

*it can also be used as an outdoor luminaire for facade lighting.*

### **Technical Features**

- Aluminium body.
- High efficient reflectors in Spot, Medium, Wide versions and tempered protection glass.
- Pure light without IR/UV radiation.
- Efficient thermal management.
- Operation life: 50,000 hours with efficiency > 80% of the initial luminous flux (L80B10).

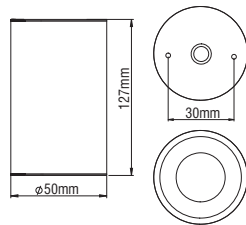
### **Upon request:**

Available with highest colour rendering index (CRI)

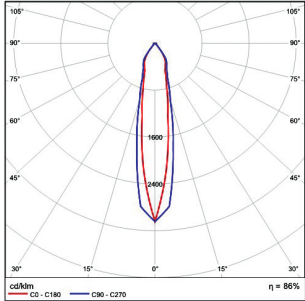


# ROLLER

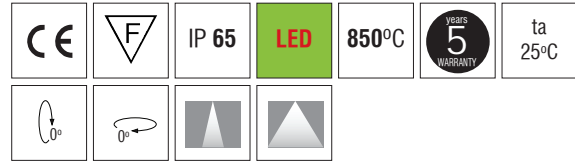
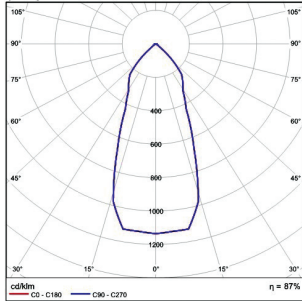
## ROLLER MINI 5 LED IP65



### MEDIUM



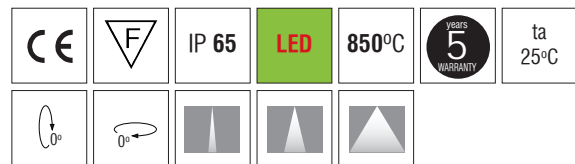
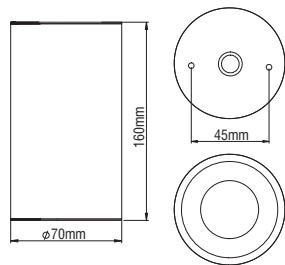
### WIDE



- Aluminium body, painted electrostatically in selected colour or plated.
- High efficient reflectors in Medium and Wide versions.
- Tempered protection glass.
- Silicon gasket.
- CRI: min. 80 / SDCM: 3
- Luminous Efficacy:  
5W: 4000 K: 116 Lm/Watt  
5W: 3000 K: 109 Lm/Watt

Code	Description	Kg
88006	ROLLER MINI 5 LED 5W IP65	0,700

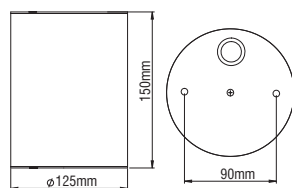
## ROLLER MINI 7 LED IP65



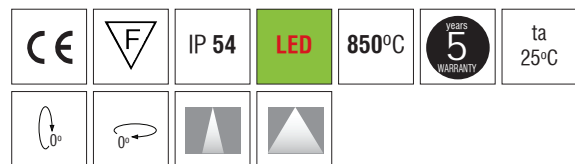
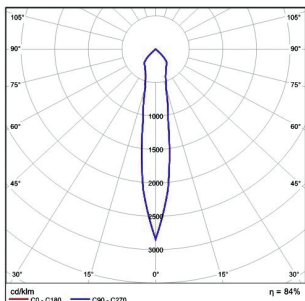
- Aluminium body, painted electrostatically in selected colour or plated.
- High efficient reflectors in Spot, Medium and Wide versions.
- Tempered protection glass.
- Silicon gasket.
- CRI: min. 80 / SDCM: 3
- Luminous Efficacy:  
8W: 4000 K: 119 Lm/Watt  
8W: 3000 K: 114 Lm/Watt

Code	Description	Kg
88007	ROLLER MINI 7 LED 8W IP65	1,000

## ROLLER 12 LED SHORT IP54



### MEDIUM



- Aluminium body, painted electrostatically in selected colour or plated.
- High efficient reflectors in Medium and Wide versions.
- Tempered protection glass.
- 230V/50Hz module.
- Dimmer Phase Cut.
- CRI: min. 80 / SDCM: 3
- Luminous Efficacy:  
20W: 4000 K: 95 Lm/Watt  
20W: 3000 K: 90 Lm/Watt

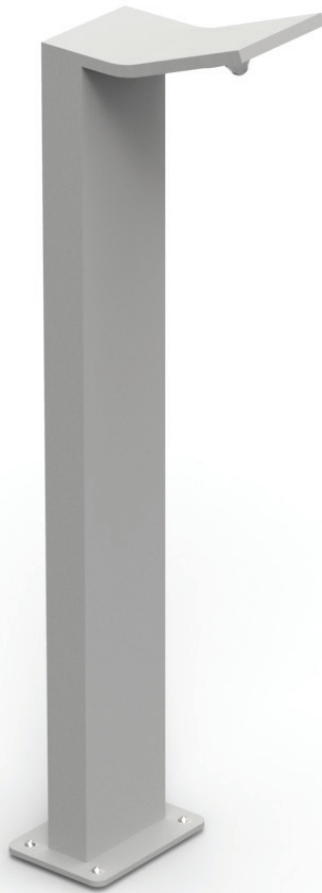
Code	Description	Kg
88019	ROLLER 12 LED 20W SHORT IP54	1,500

**LED COLOUR CODES:**  
2 Warm 3 Neutral

**BEAM CODES:**  
01 spot 02 medium 03 wide

**Colour Codes:**  
0 Colours 1 White 2 Titan 3 Black 4 Chrome 5 matt Alum.

## GEA GROUND



*GEA Ground with its elegance style and its high IP protection degree (IP65), present itself as an ideal solution for illuminating squares, parks, gardens etc.*

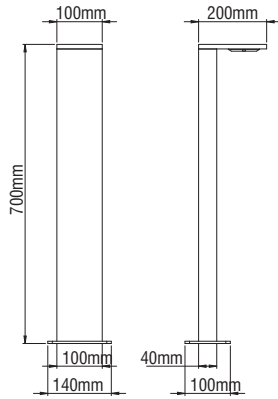
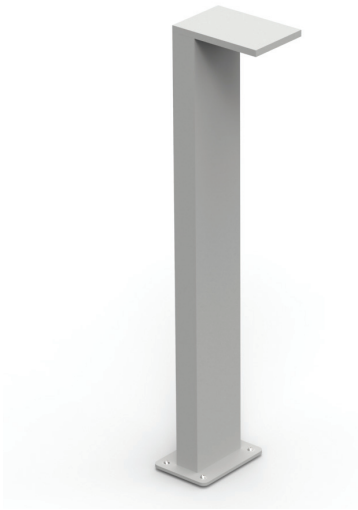
### **Technical Features**

- Body from aluminium profile, painted electrostatically in selected colour.
- Diffuser from high efficiency opal satin PMMA or wide beam glass lens for EMBO version.
- Led source with integrated led driver.
- Silicon gaskets.
- Stainless steel screws.
- Accessories for floor or ground installation.
- Operation life: 50,000 hours with efficiency > 70% of the initial luminous flux (L70B50).



# GEA GROUND

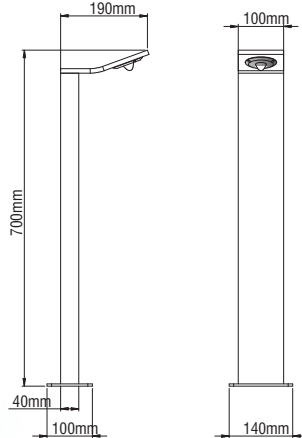
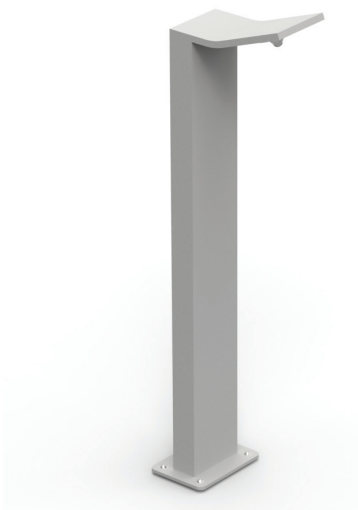
## GEA GROUND



- Aluminium body.
- Beam: Diffuser.
- Connection for operation in 230V/50Hz.
- Dimmer Phase Cut.
- CRI: min. 80 / SDCM: 3
- Luminous Efficacy:
  - 4W: 4000 K: 95 Lm/Watt
  - 4W: 3000 K: 90 Lm/Watt
  - 8W: 4000 K: 95 Lm/Watt
  - 8W: 3000 K: 90 Lm/Watt

Code	Description
84452	Gea Ground 4W Neutral
84453	Gea Ground 4W Warm
84454	Gea Ground 8W Neutral
84455	Gea Ground 8W Warm

## GEA GROUND EMBO



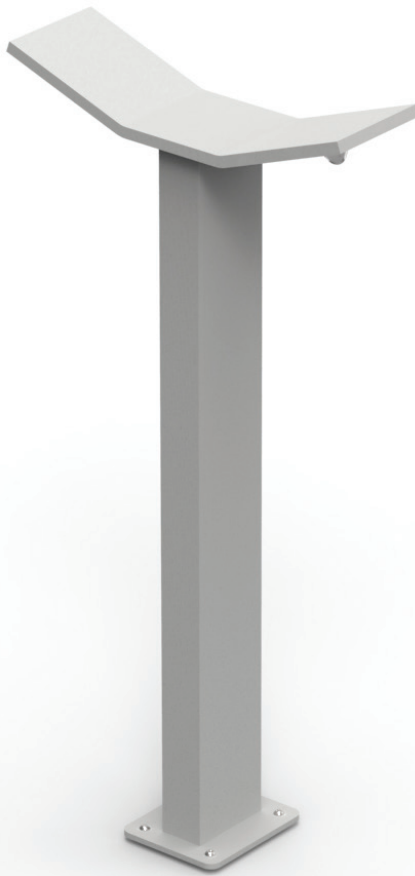
- Aluminium body.
- Beam: Diffuser - glass lens.
- Connection for operation in 230V/50Hz.
- Dimmer Phase Cut.
- CRI: min. 80 / SDCM: 3
- Luminous Efficacy:
  - 4W: 4000 K: 95 Lm/Watt
  - 4W: 3000 K: 90 Lm/Watt
  - 8W: 4000 K: 95 Lm/Watt
  - 8W: 3000 K: 90 Lm/Watt

Code	Description
84456	Gea Ground Embo 4W Neutral
84457	Gea Ground Embo 4W Warm
84458	Gea Ground Embo 8W Neutral
84459	Gea Ground Embo 8W Warm

**Colour Codes:**

0 Colours 1 White 2 Titan 3 Black

# FIVI GROUND



*FIVI Ground with its elegance style and its high IP protection degree (IP65), present itself as an ideal solution for illuminating squares, parks, gardens etc.*

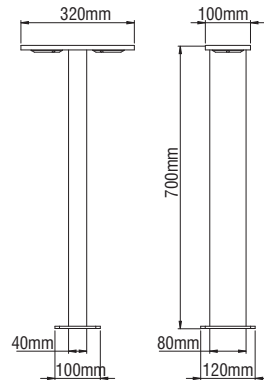
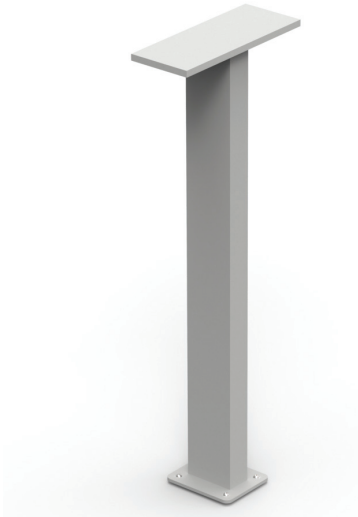
## **Technical Features**

- Body from aluminium profile, painted electrostatically in selected colour.
- Diffuser from high efficiency opal satin PMMA or wide beam glass lens for EMBO version.
- Led source with integrated led driver.
- Silicon gaskets.
- Stainless steel screws.
- Accessories for floor or ground installation.
- Operation life: 50,000 hours with efficiency > 70% of the initial luminous flux (L70B50).



# FIVI GROUND

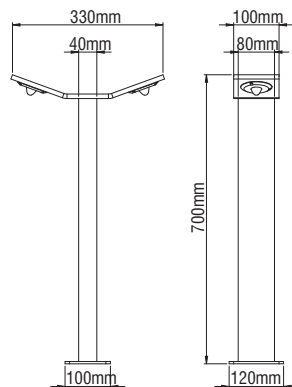
## FIVI GROUND



- Aluminium body.
- Beam: Diffuser.
- Connection for operation in 230V/50Hz.
- Dimmer Phase Cut.
- CRI: min. 80 / SDCM: 3
- Luminous Efficacy:
  - 4W: 4000 K: 95 Lm/Watt
  - 4W: 3000 K: 90 Lm/Watt
  - 8W: 4000 K: 95 Lm/Watt
  - 8W: 3000 K: 90 Lm/Watt

Code	Description
84460	Fivi Ground 2x4W Neutral
84461	Fivi Ground 2x4W Warm
84462	Fivi Ground 2x8W Neutral
84463	Fivi Ground 2x8W Warm

## FIVI GROUND EMBO



- Aluminium body.
- Beam: Diffuser - glass lens.
- Connection for operation in 230V/50Hz.
- Dimmer Phase Cut.
- CRI: min. 80 / SDCM: 3
- Luminous Efficacy:
  - 4W: 4000 K: 95 Lm/Watt
  - 4W: 3000 K: 90 Lm/Watt
  - 8W: 4000 K: 95 Lm/Watt
  - 8W: 3000 K: 90 Lm/Watt

Code	Description
84464	Fivi Ground Embo 2x4W Neutral
84465	Fivi Ground Embo 2x4W Warm
84466	Fivi Ground Embo 2x8W Neutral
84467	Fivi Ground Embo 2x8W Warm

### Colour Codes:

0 Colours 1 White 2 Titan 3 Black

# PYROS



*PYROS with its elegance style and its high IP protection degree (IP65), present itself as an ideal solution for illuminating squares, parks, gardens etc.*

## **Technical Features**

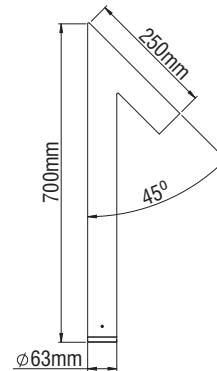
- Body from aluminium profile, painted electrostatically in selected colour.
- Diffuser from high efficiency opal satin PMMA.
- Led source with integrated led driver.
- Silicon gaskets.
- Stainless steel screws.
- Accessories for floor or ground installation.
- Operation life: 50,000 hours with efficiency > 80% of the initial luminous flux (L80B10).



# PYROS



- Aluminium body.
  - Beam: Diffuser.
  - Connection for operation in 230V/50Hz.
  - Dimmer Phase Cut.
  - CRI: min. 80 / SDCM: 3
  - Luminous Efficacy:
- |     |         |            |
|-----|---------|------------|
| 4W: | 4000 K: | 95 Lm/Watt |
| 4W: | 3000 K: | 90 Lm/Watt |
| 8W: | 4000 K: | 95 Lm/Watt |
| 8W: | 3000 K: | 90 Lm/Watt |

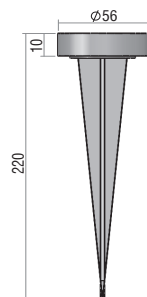
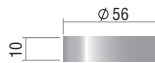


Code	Description	Kg
84421	Pyros 4W Neutral	1,500
84422	Pyros 4W Warm	1,500
84423	Pyros 8W Neutral	1,500
84424	Pyros 8W Warm	1,500

**Colour Codes:**

0	Colours	1	White	2	Titan	3	Black
---	---------	---	-------	---	-------	---	-------

## PYROS ACCESSORIES



Code	Description	Kg
804606	Base PYROS (for floor installation)	0,050
804607	Picket PYROS (for ground installation)	0,100











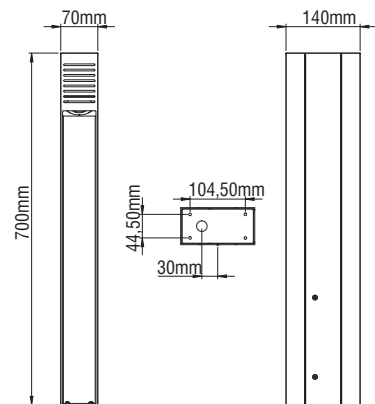
# KRITON



*KRITON with its unique style and its high IP protection degree (IP65), present itself as an ideal solution for illuminating squares, parks, gardens etc.*

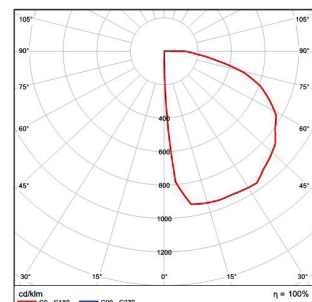
## Technical Features

- Body from aluminium profile, painted electrostatically in selected colour.
- Diffuser from high efficiency opal satin PMMA.
- Led source with integrated led driver.
- Silicon gaskets.
- Stainless steel screws.
- Base for floor installation.
- Operation life: 50,000 hours with efficiency > 80% of the initial luminous flux (L80B10).



- Aluminium body.
- Beam: Diffuser.
- Connection for operation in 230V/50Hz.
- Dimmer Phase Cut.
- CRI: min. 80 / SDCM: 3
- Luminous Efficacy:
  - 4W: 4000 K: 95 Lm/Watt
  - 4W: 3000 K: 90 Lm/Watt
  - 8W: 4000 K: 95 Lm/Watt
  - 8W: 3000 K: 90 Lm/Watt

Code	Description	Kg
84430	Kriton 4W Neutral	2,000
84431	Kriton 4W Warm	2,000
84432	Kriton 8W Neutral	2,000
84433	Kriton 8W Warm	2,000



### Colour Codes:

0 Colours 1 White 2 Titan 3 Black



# KRITON





# SKAT



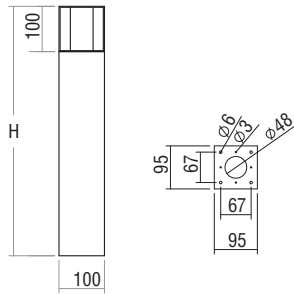
## Technical Features

- Body made of aluminium profile
- Protection degree IP54 at the optical assembly.



# SKAT

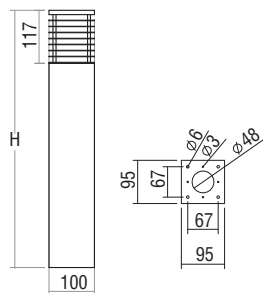
## SKAT 1



- Cylindrical diffuser made of acrylic satine.

Code	Description
84301	Height 20cm 1x max.11W TC-TSE / E27
84302	Height 35cm 1x max.11W TC-TSE / E27
84303	Height 55cm 1x max.11W TC-TSE / E27
84304	Height 100cm 1x max.11W TC-TSE / E27

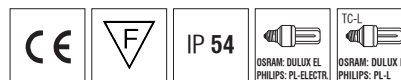
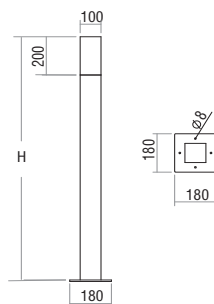
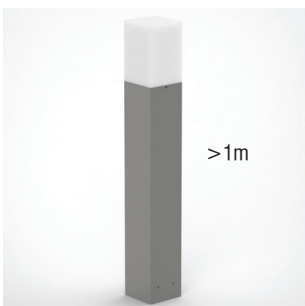
## SKAT 2



- Cylindrical diffuser made of acrylic satine.  
- Aluminium blinds.

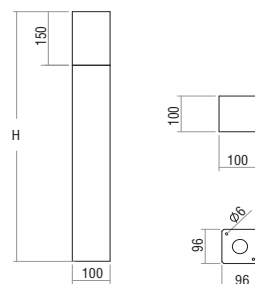
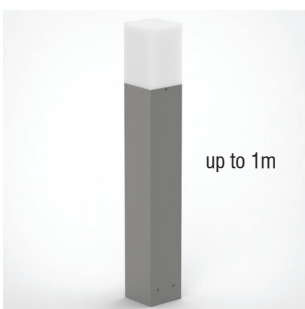
Code	Description
84311	Height 20cm 1x max.11W TC-TSE / E27
84312	Height 35cm 1x max.11W TC-TSE / E27
84313	Height 55cm 1x max.11W TC-TSE / E27
84314	Height 100cm 1x max.11W TC-TSE / E27

## SKAT 3



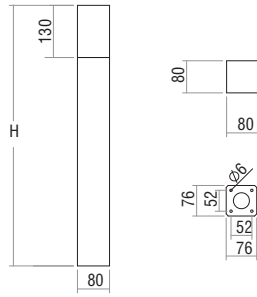
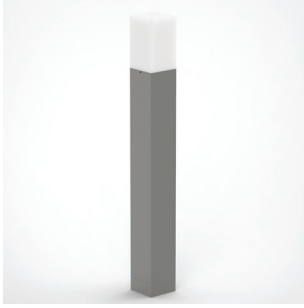
- Diffuser made of acrylic satine

Code	Description
84321	Height H 35cm 1x max.14W TC-TSE / E27
84322	Height H 45cm 1x max.14W TC-TSE / E27
84323	Height H 70cm 1x max.14W TC-TSE / E27
84324	Height H 100cm 1x max.14W TC-TSE / E27
84325	Height H 164cm 1x max.18W TC-L / 2G11 (with base)



# SKAT

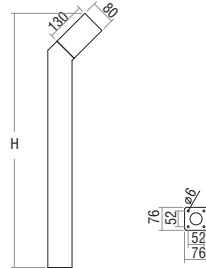
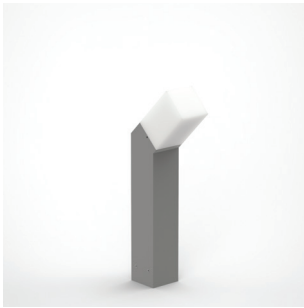
## SKAT 4



- Diffuser made of acrylic satine.

Code	Description
84331	Height H 35cm 1x max.14W TC-TSE / E27
84332	Height H 45cm 1x max.14W TC-TSE / E27
84333	Height H 70cm 1x max.14W TC-TSE / E27
84334	Height H 100cm 1x max.14W TC-TSE / E27
84335	Height H 17cm <b>ceiling</b> 1x max.14W TC-TSE / E27

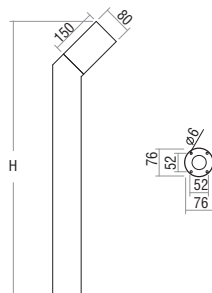
## SKAT 5 Curved



- Diffuser made of acrylic satine.

Code	Description
84341	Height H 50cm 1x max.14W TC-TSE / E27
84342	Height H 90cm 1x max.14W TC-TSE / E27

## SKAT 6 Curved



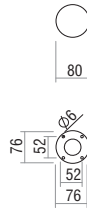
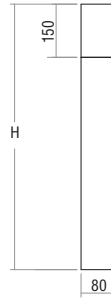
- Diffuser made of acrylic satine.

Code	Description
84357	Height H 50cm 1x max.14W TC-TSE / E27
84358	Height H 90cm 1x max.14W TC-TSE / E27



## SKAT

## SKAT 6



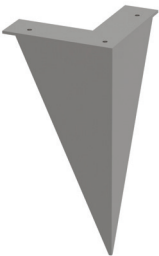
- Diffuser made of acrylic satine.

Code	Description
84351	Height H 35cm 1x max.14W TC-TSE / E27
84352	Height H 55cm 1x max.14W TC-TSE / E27
84353	Height H 70cm 1x max.14W TC-TSE / E27
84354	Height H 100cm 1x max.14W TC-TSE / E27
84355	Height H 22cm <b>ceiling</b> 1x max.14W TC-TSE / E27

## Colour Codes:

0 Colours 1 White 2 Titan 3 Black

## SKAT ACCESSORY - PICKET



- Steel body  
- For ground installation.

Code	Description
804304	PICKET for SKAT 1 - 2
804301	PICKET for SKAT 3
804302	PICKET for SKAT 4 - 5
804303	PICKET for SKAT 6



# SKAT





# SKAT





# SKAT 7 LED

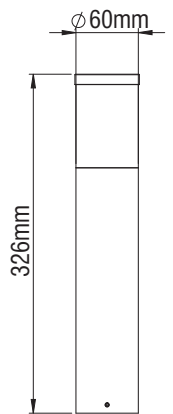


## Technical Features

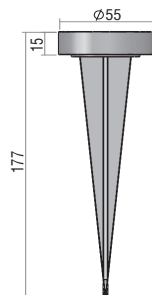
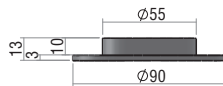
- Body made of aluminium profile.
- Diffuser made of sandblasted methacrylate.
- Base for floor installation.
- Picket for ground installation
- Connection for operation in 230V/50Hz.
- Dimmer Phase Cut.
- CRI: min. 80 / SDCM: 3
- Luminous Efficacy:  
4W: 4000 K: 95 Lm/Watt  
4W: 3000 K: 90 Lm/Watt



Code	Description
84662262	1 LED x 4W (Integrated Control Gear) (N) Neutral



## SKAT 7 ACCESSORIES



Code	Description	Colours
804602	Base SKAT 7 (for floor installation)	White
804603	Base SKAT 7 (for floor installation)	Titan
804604	Base SKAT 7 (for floor installation)	Colours
804601	Picket SKAT 7 (for ground installation)	Titan

### Colour Codes:

0 Colours 1 White 2 Titan 3 Black



# SKAT 7 LED



## SKAT 10



*A modern ground mounted luminaire with LED source.  
It is ideal for home outdoor lighting.*

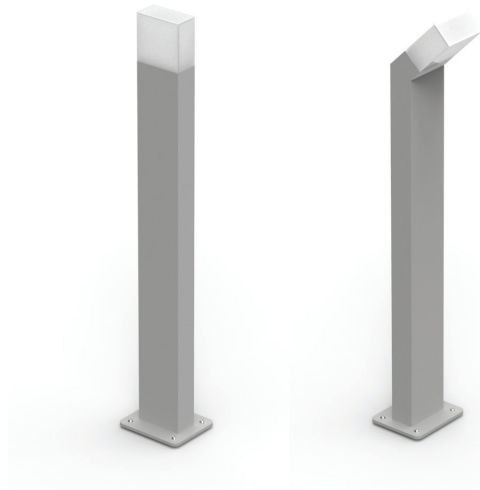
### **Technical Features**

- Aluminium body, painted electrostatically in selected colour.
- Aluminium mounting base.
- Diffuser from high efficiency opal PMMA.
- Pure light without IR/UV radiation.
- Operation life: 50,000 hours with efficiency > 80% of the initial luminous flux (L80B10).



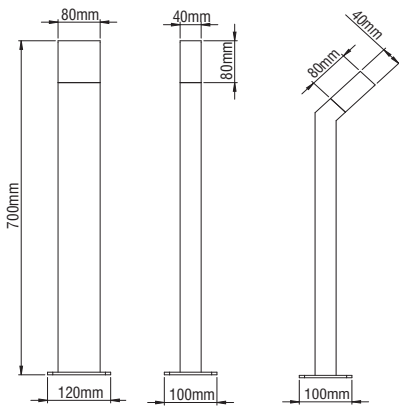
# SKAT 10

## SKAT 10 Small / SKAT 10 EMBO Small

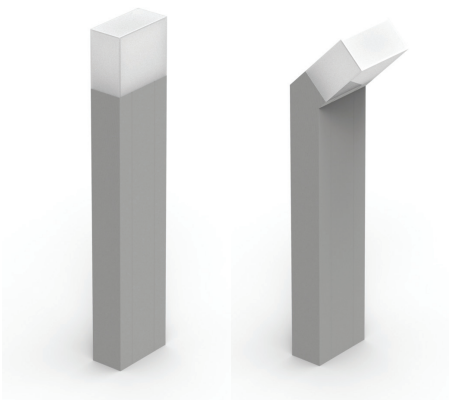


- For Led chip.
- Aluminium body.
- Opal PMMA cover.
- 230V/50Hz.
- CRI: min. 80 / SDCM: 3
- Luminous Efficacy:  
4W: 4000 K: 100 Lm/Watt  
4W: 3000 K: 94 Lm/Watt

Code	Description
84444	Skat 10 Small 1x4W Warm
84445	Skat 10 Small 1x4W Neutral
84446	Skat 10 Small Embo 1x4W Warm
84447	Skat 10 Small Embo 1x4W Neutral

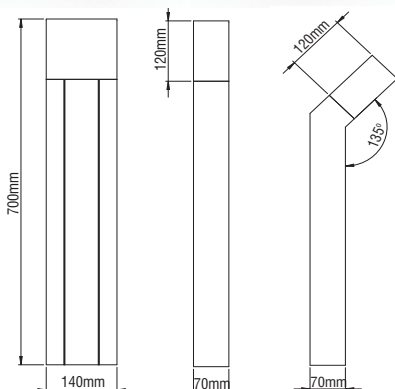


## SKAT 10 Big / SKAT 10 EMBO Big



- For Led chip.
- Aluminium body.
- Opal PMMA cover.
- 230V/50Hz.
- Dimmer Phase Cut.
- CRI: min. 80 / SDCM: 3
- Luminous Efficacy:  
4W: 4000 K: 95 Lm/Watt  
4W: 3000 K: 90 Lm/Watt

Code	Description
84448	Skat 10 Big 2x4W Warm
84449	Skat 10 Big 2x4W Neutral
84450	Skat 10 Big Embo 2x4W Warm
84451	Skat 10 Big Embo 2x4W Neutral



**Colour Codes:**

- 0 Colours 1 White 2 Titan 3 Black



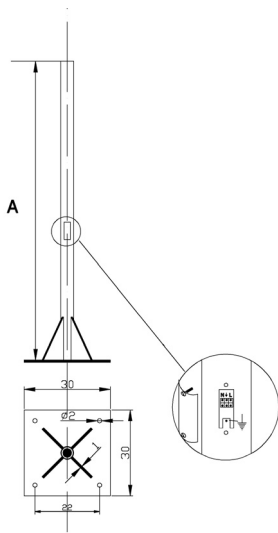
# SKAT 10





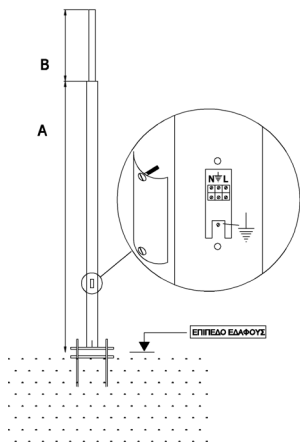
# POLES

- Pole  $\varnothing 60\text{mm}$  with support base 30x30cm electrostatically painted. Inspection window with removable terminal block for quick connection.



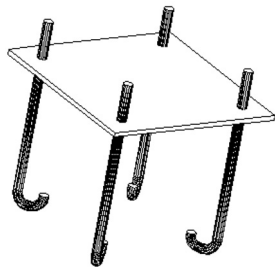
Code	Description	Height A
704601	POLE $\varnothing 60\text{mm}$	3000
704602	POLE $\varnothing 60\text{mm}$	4000

- Pole  $\varnothing 102\text{mm}$  with end  $\varnothing 60\text{mm}$ , with support base 30x30cm electrostatically painted. Inspection window with removable terminal block for quick connection.



Code	Description	Height	
		A	B
704606	POLE $\varnothing 102\text{mm}$ - $\varnothing 60\text{mm}$	3000+1000	
704607	POLE $\varnothing 102\text{mm}$ - $\varnothing 60\text{mm}$	3000+2000	

- Anchor Bolts.



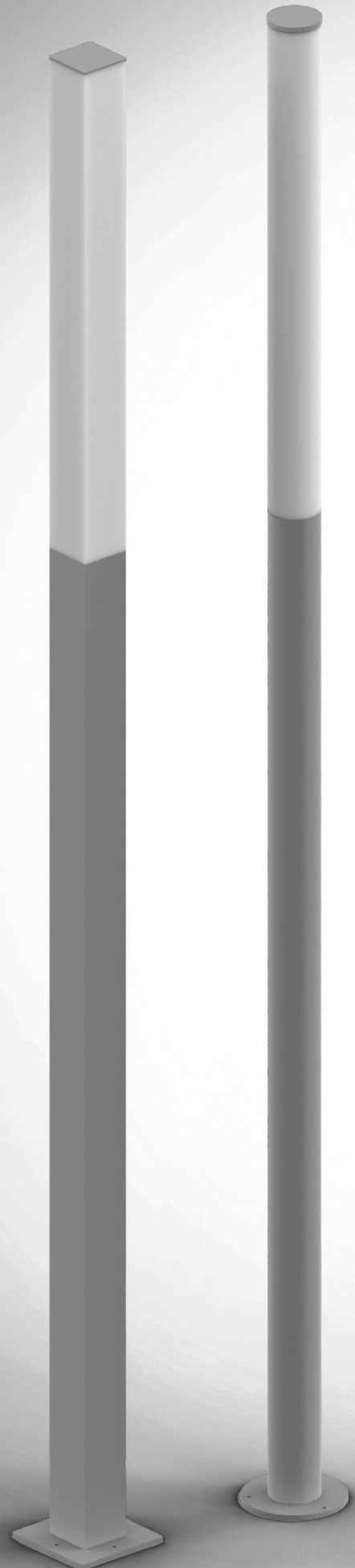
Code	Description
704620	ANCHOR BOLTS 30x30cm
704621	ANCHOR BOLTS 40x40cm

## SKAT 8

*SKAT 8 is a pioneer in contemporary outdoor lighting. It's extensive product range and it's high IP protection degree (IP54), present itself as an ideal solution for illuminating squares, parks, gardens etc.*

### Technical Features

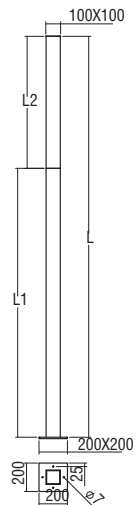
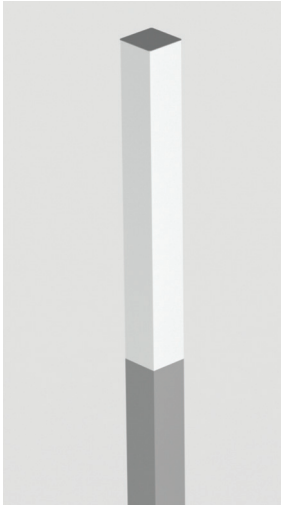
- Body from aluminium profile, painted electrostatically in selected colour.
- Base from aluminium profile, painted electrostatically in selected colour.
- Diffuser from high efficiency opal satin PMMA.
- Silicon gaskets.
- Stainless steel screws.
- Electronic control gear included.
- For TC-L and T16 lamps.
- Light distribution 360°.





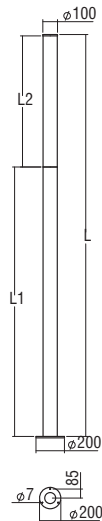
# SKAT 8

## SKAT 8 Square



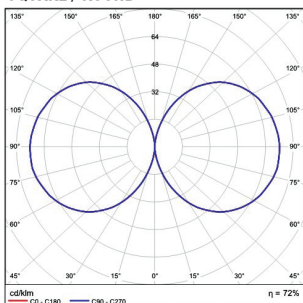
Code	Description	L	L1	L2
84376	Skat 8 Q 100x100 1x55W TC-L	2,50m	2,00m	0,50m
84377	Skat 8 Q 100x100 1x24W T16	2,50m	2,00m	0,50m
84378	Skat 8 Q 100x100 1x39W T16	2,50m	1,70m	0,80m
84379	Skat 8 Q 100x100 1x54W T16	2,50m	1,40m	1,10m

## SKAT 8 Round



Code	Description	L	L1	L2
84371	Skat 8 R Ø100 1x55W TC-L	2,50m	2,00m	0,50m
84372	Skat 8 R Ø100 1x24W T16	2,50m	2,00m	0,50m
84373	Skat 8 R Ø100 1x39W T16	2,50m	1,70m	0,80m
84374	Skat 8 R Ø100 1x54W T16	2,50m	1,40m	1,10m

## SQUARE / ROUND



**Colour Codes:**

0	Colours	1	White	2	Titan	3	Black
---	---------	---	-------	---	-------	---	-------

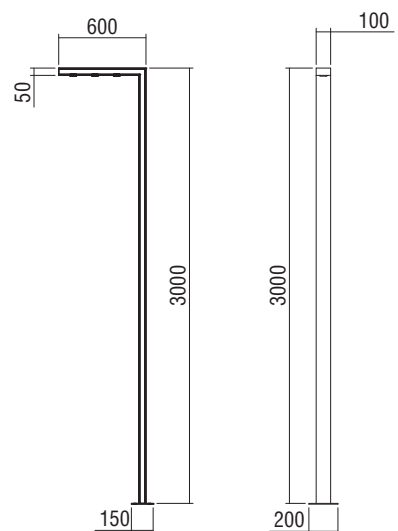
# SKAT 9



The SKAT 9 LED is the ideal lighting solution with LED technology and high IP protection degree for squares, parks, gardens e.t.c. providing simultaneously a unique architectural option.

## Technical Features

- Aluminium body 50x100mm with 2mm thickness, painted electrostatically in selected colour.
- Body base from steel 150x200mm and 10mm thickness.
- Led source integrated 3x8W.
- High efficiency opal or prismatic cover.
- Silicone sealant.
- Connection for operation in 230V/50Hz.
- Operation life: 50,000 hours with efficiency > 80% of the initial luminous flux (L80B10).



- Beams: Wide, Diffuser.
- Connection for operation in 230V/50Hz.
- Dimmer Phase Cut.
- CRI: min. 80 / SDCM: 3
- Luminous Efficacy:  
3x8W: 4000 K: 95 Lm/Watt  
3x8W: 3000 K: 90 Lm/Watt

Code	Description
84683	Skat 9 3x8W Height 300cm

### LED COLOUR CODES:

2 Warm 3 Neutral

### BEAM CODES:

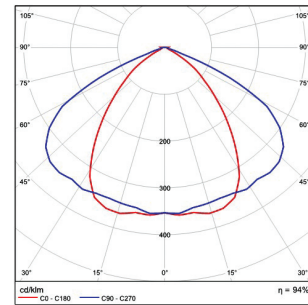
00 diffuser 03 wide

### Colour Codes:

0 Colours 1 White 2 Titan 3 Black



# MEGA SKAT



The MEGA SKAT LED is the ideal lighting solution with LED technology and high IP protection degree for squares, parks, gardens e.t.c. providing simultaneously a unique architectural option.

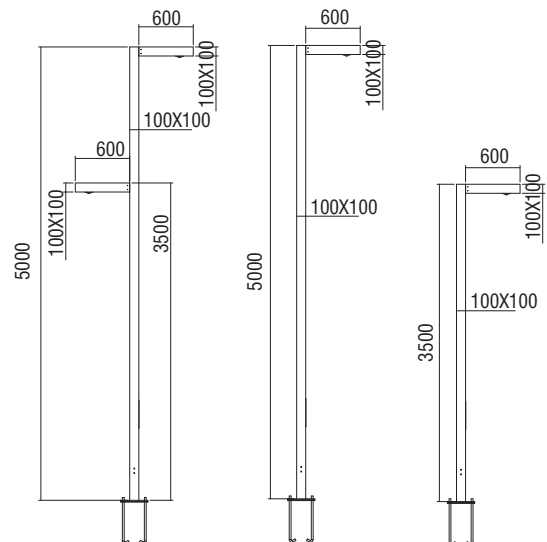
## Technical Features

- Aluminium body 100x100mm with 3mm thickness, painted electrostatically in selected colour.
- Body base from steel 300x300mm and 10mm thickness.
- High efficiency reflector.
- Special glass lens for asymmetrical distribution ideal for street lighting.
- Silicone sealant.
- Connection for operation in 230V/50Hz.
- Operation life: 50,000 hours with efficiency > 80% of the initial luminous flux (L80B10).



- Beams: Spot, Medium, Wide, Street.
- Connection for operation in 230V/50Hz.
- CRI: min. 80 / SDCM: 3
- Luminous Efficacy:  
 20W: 5000 K: 100 Lm/Watt  
 20W: 4000 K: 95 Lm/Watt  
 20W: 3000 K: 90 Lm/Watt

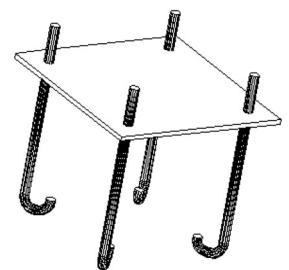
Code	Description
84391	Mega Skat 1 1x20W Height 350cm
84392	Mega Skat 2 1x20W Height 500cm
84393	Mega Skat 3 2x20W Height 500cm



## ACCESSORY

- Anchor Bolts.

Code	Description
704620	ANCHOR BOLTS 30x30cm



LED COLOUR CODES:		
1	Cool	2 Warm
3	Neutral	

BEAM CODES:				
01	spot	02	medium	03 wide
				05 street

Colour Codes:				
0	Colours	1	White	2 Titan
				3 Black

# POINT



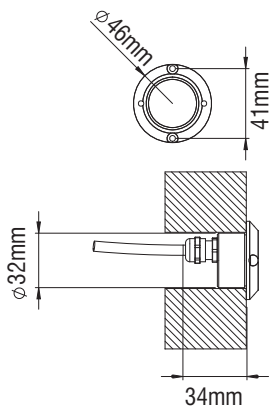
*Wall mounted luminaire,  
with plain and accurate design,  
for outdoor applications.*

## **Technical Features**

- Aluminium body, painted electrostatically in selected colour.
- Opal PMMA cover.
- Pure light without IR/UV radiation.
- Operation life: 50,000 hours with efficiency > 80% of the initial luminous flux (L80B10).
- Supplied with 2x0,75mm NEOPRENE 1m cable.
- Connection for operation with constant current.



# POINT



- Aluminium body.
- 1W power consumption driven at 350mA.
- CRI: min. 80 / SCDM: 3
- Luminous Efficacy:  
1W: 3000 K: 154 Lm/Watt  
1W: 4000 K: 164 Lm/Watt

Code	Description	Kg
85835	POINT LED 1W IP65 Warm	0,200
85836	POINT LED 1W IP65 Neutral	0,200

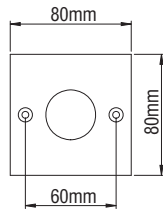
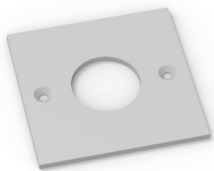
### DRIVER

350mA 3W IP65

38x27x21

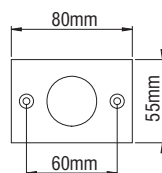
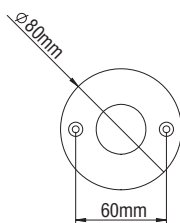
CODES	LUMINAIRE	800035
85835	POINT Led 1W Warm (350mA)	1 - 3 modules
85836	POINT Led 1W Neutral (350mA)	1 - 3 modules

### ACCESSORIES



- Frame from aluminium painted electrostatically in selected colour.

Code	Description	Kg
80035	Frame 80x80mm for POINT	0,150
80036	Frame Ø80mm for POINT	0,150
80037	Frame 80x55mm for POINT	0,150



#### Colour Codes:

0 Colours 1 White 2 Titan 3 Black 4 Chrome 5 matt Alum.

## MIRTO / MIRTO 230



*Wall mounted luminaire,  
with plain and accurate design,  
for outdoor applications.*

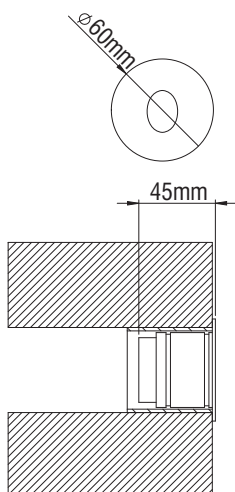
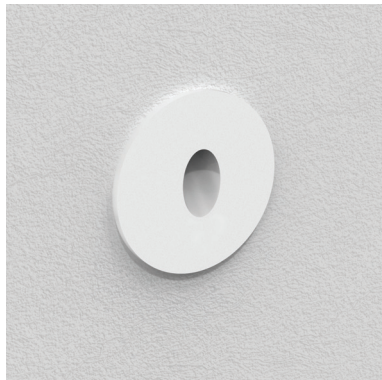
### **Technical Features**

- Aluminium body, painted electrostatically in selected colour.
- Pure light without IR/UV radiation.
- Operation life: 50,000 hours with efficiency > 80% of the initial luminous flux (L80B10).
- Supplied with 3x0,75mm NEOPRENE 1m cable.



# MIRTO / MIRTO 230

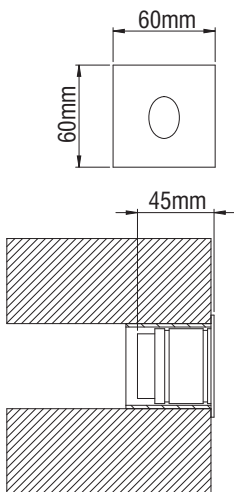
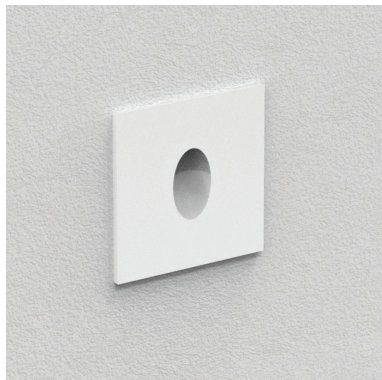
## MIRTO



- Aluminium body.
- Connection for operation 12V DC.
- CRI: min. 80 / SCDM: 3
- Luminous Efficacy:  
2W: 3000 K: 100 Lm/Watt  
2W: 4000 K: 107 Lm/Watt

Code	Description	Kg
85837	MIRTO LED 2W IP65 Warm	0,400
85838	MIRTO LED 2W IP65 Neutral	0,400

## MIRTO Q



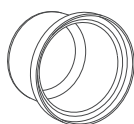
- Aluminium body.
- Connection for operation 12V DC.
- CRI: min. 80 / SCDM: 3
- Luminous Efficacy:  
2W: 3000 K: 100 Lm/Watt  
2W: 4000 K: 107 Lm/Watt

Code	Description	Kg
85848	MIRTO Q LED 2W IP65 Warm	0,400
85849	MIRTO Q LED 2W IP65 Neutral	0,400

## DRIVER

LED LUMAIRES DESCRIPTION	N° Luminaires		DIMENSIONS mm	CODE	
	min.	max.			
MIRTO / MIRTO Q (CONSTANT VOLTAGE)	1	6	12V DC 13W IP20	160 x 22 x 19	800060

Outercasing (included)



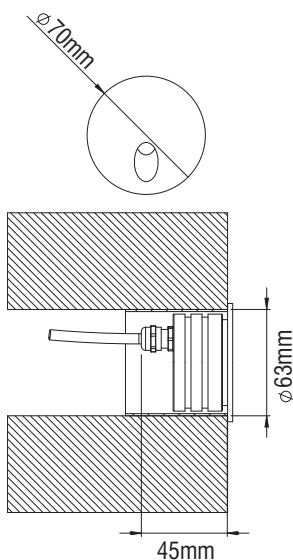
∅50mm x 60mm: Outer dimensions  
∅47mm x 60mm: Inner dimensions

### Colour Codes:

0 Colours 1 White 2 Titan 3 Black 4 Chrome 5 matt Alum.

# MIRTO / MIRTO 230

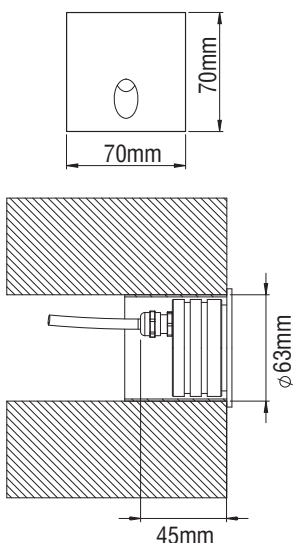
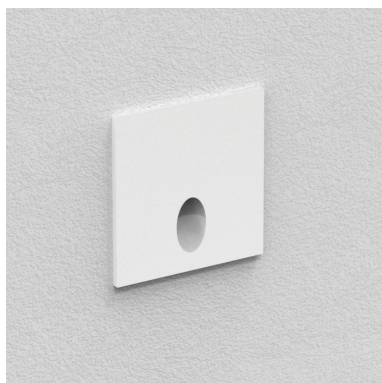
## MIRTO 230



- Aluminium body.
- Dimmer Phase Cut.
- Power LED 230V AC/50Hz.
- CRI: min. 80 / SCDM: 3
- Luminous Efficacy:  
4W: 3000 K: 90 Lm/Watt  
4W: 4000 K: 95 Lm/Watt

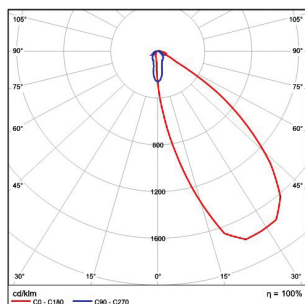
Code	Description	Kg
85844	MIRTO 230 LED 4W IP65 Warm	0,400
85845	MIRTO 230 LED 4W IP65 Neutral	0,400

## MIRTO 230 Q

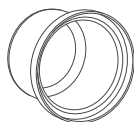


- Aluminium body.
- Dimmer Phase Cut.
- Power LED 230V AC/50Hz.
- CRI: min. 80 / SCDM: 3
- Luminous Efficacy:  
4W: 3000 K: 90 Lm/Watt  
4W: 4000 K: 95 Lm/Watt

Code	Description	Kg
85846	MIRTO 230 Q LED 4W IP65 Warm	0,400
85847	MIRTO 230 Q LED 4W IP65 Neutral	0,400



Outer casing  
(included)



∅63mm x 60mm: Outer dimensions  
∅60mm x 60mm: Inner dimensions

### Colour Codes:

0 Colours   1 White   2 Titan   3 Black   4 Chrome   5 matt Alum.



# MIRTO / MIRTO 230



# TYCO



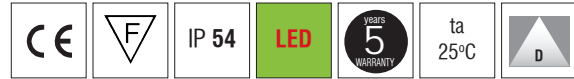
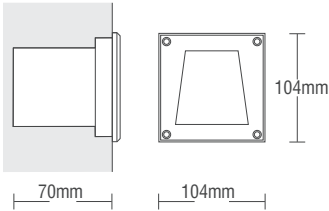
*Wall mounted luminaire,  
with plain and accurate design,  
for outdoor applications.*

## **Technical Features**

- Aluminium body, painted electrostatically in selected colour.
- Sandblasted glass.
- Metal blind.
- Silicone sealant.
- Pure light without IR/UV radiation.
- Operation life: 50,000 hours with efficiency > 80% of the initial luminous flux (L80B10).
- Connection for operation with 220-240V AC 0-50Hz.



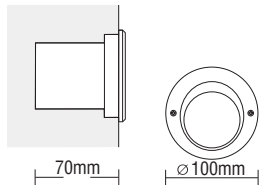
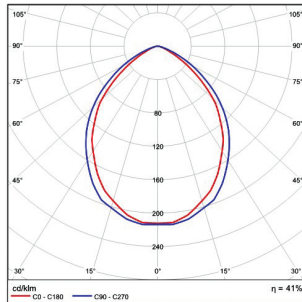
**TYCO S**



- Aluminium body.
- Sandblasted glass.
- Silicone sealant.
- Dimmer Phase Cut.
- Power LED 230V AC/50Hz.
- CRI: min. 80 / SDCM: 3
- Luminous Efficacy:  
4W: 3000 K: 90 Lm/Watt  
4W: 4000 K: 95 Lm/Watt

Code	Description	Kg
85795	Tyco S Led 4W 230V AC Warm	0,400
85796	Tyco S Led 4W 230V AC Neutral	0,400

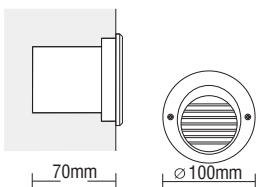
**TYCO R**



- Aluminium body.
- Sandblasted glass.
- Silicone sealant.
- Dimmer Phase Cut.
- Power LED 230V AC/50Hz.
- CRI: min. 80 / SDCM: 3
- Luminous Efficacy:  
4W: 3000 K: 90 Lm/Watt  
4W: 4000 K: 95 Lm/Watt

Code	Description	Kg
85797	Tyco R Led 4W 230V AC Warm	0,400
85798	Tyco R Led 4W 230V AC Neutral	0,400

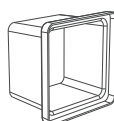
**TYCO RB**



- Aluminium body.
- Sandblasted glass.
- Metal blind.
- Silicone sealant.
- Dimmer Phase Cut.
- Power LED 230V AC/50Hz.
- CRI: min. 80 / SDCM: 3
- Luminous Efficacy:  
4W: 3000 K: 90 Lm/Watt  
4W: 4000 K: 95 Lm/Watt

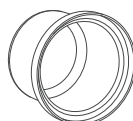
Code	Description	Kg
85822	Tyco RB Led 4W 230V AC Warm	0,400
85823	Tyco RB Led 4W 230V AC Neutral	0,400

**Outercasing 968**



103x103x70mm

**Outercasing 967**



Ø 97x 70mm

**Colour Codes:**

- 1 White   2 Titan   5 matt Alum.

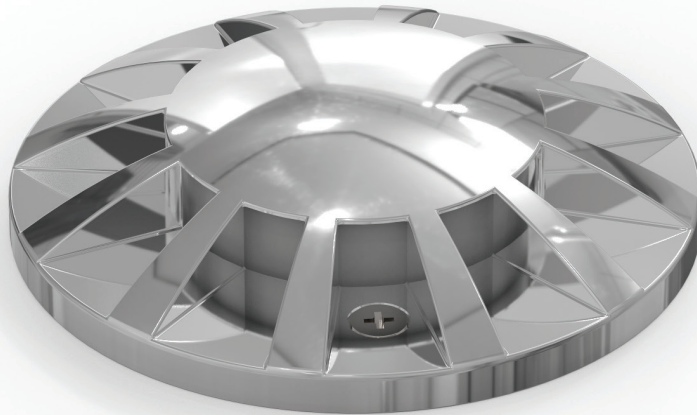
# TYCO





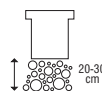


# LITHOS



## Technical Features

- Aluminium or stainless steel body.
- Thermoplastic mounting base.
- Tempered protection glass.
- Silicon gasket.
- Pure light without IR/UV radiation.
- Operation life: 50,000 hours with efficiency > 80% of the initial luminous flux (L80B10).



**Note:** For the proper installation of the fitting an effective drainage as well as a 20-30cm deep layer of gravel must be intended for dewatering.



To ensure the degree of protection the use of flexible power supply cable type H07RN-F is required.

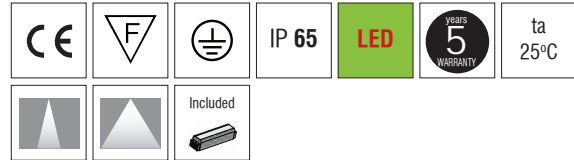
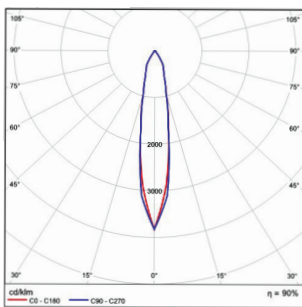
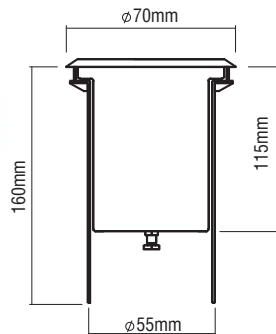


Temperature on glass surface.



# LITHOS

## LITHOS S



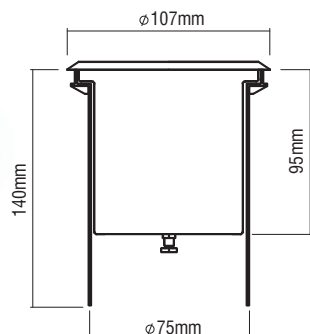
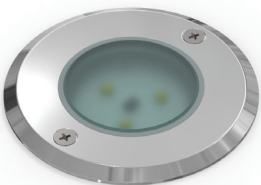
- Aluminium body.
- High efficient reflectors in Medium and Wide versions.
- Tempered protection glass.
- Silicon gasket.
- Thermoplastic housing.
- 230V/50Hz.
- Supplied with 3x0,75mm NEOPRENE 1m cable.
- CRI: min. 80 / SDCM: 3
- Luminous Efficacy:  
 5W 4000K 100 Lm/Watt 500mA  
 5W 3000K 96 Lm/Watt 500mA



- Roll over weight max. 1000kg with minimum speed drive 20km/h.

Code	Description	Kg
84230	LITHOS S LED 5W IP65	0,800

## LITHOS M1



- Inox stainless steel body and trim.
- Tempered protection glass.
- Silicon gasket.
- Thermoplastic housing.
- 230V/50Hz.
- Supplied with 3x0,75mm NEOPRENE 1m cable.
- CRI: min. 80 / SDCM: 3
- Luminous Efficacy:  
 3W 4000K 107 Lm/Watt 350mA  
 3W 3000K 100 Lm/Watt 350mA

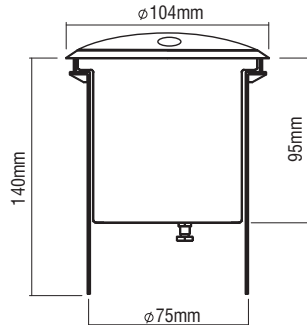


- Roll over weight max. 1000kg with minimum speed drive 20km/h.

Code	Description	Kg
842315	LITHOS M1 LED 3W IP67 Neutral	0,800
842325	LITHOS M1 LED 3W IP67 Warm	0,800
800036	LED DRIVER 350mA 18W IP67	0,100

# LITHOS

## LITHOS M2

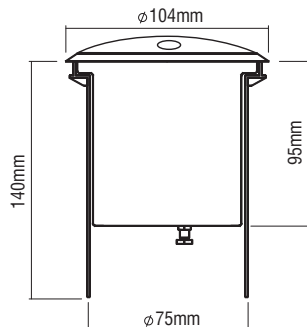


- Inox stainless steel body and trim.
- Tempered protection glass.
- Silicon gasket.
- Thermoplastic housing.
- 230V/50Hz.
- Supplied with 3x0,75mm NEOPRENE 1m cable.
- CRI: min. 80 / SDCM: 3
- Luminous Efficacy:  
7W 4000K 121 Lm/Watt 350mA  
7W 3000K 117 Lm/Watt 350mA

- Roll over weight  max. 1000kg with minimum speed drive 20km/h.

Code	Description	Kg
842335	LITHOS M2 LED 7W IP67 Neutral	0,800
842345	LITHOS M2 LED 7W IP67 Warm	0,800
800036	LED DRIVER 350mA 18W IP67	0,100

## LITHOS M3



- Inox stainless steel body and trim.
- Tempered protection glass.
- Silicon gasket.
- Thermoplastic housing.
- 230V/50Hz.
- Supplied with 3x0,75mm NEOPRENE 1m cable.
- CRI: min. 80 / SDCM: 3
- Luminous Efficacy:  
7W 4000K 121 Lm/Watt 350mA  
7W 3000K 117 Lm/Watt 350mA

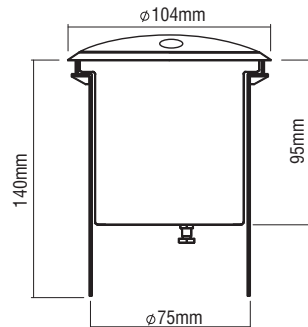
- Roll over weight  max. 1000kg with minimum speed drive 20km/h.

Code	Description	Kg
842355	LITHOS M3 LED 7W IP67 Neutral	0,800
842365	LITHOS M3 LED 7W IP67 Warm	0,800
800036	LED DRIVER 350mA 18W IP67	0,100



## LITHOS

## LITHOS M4

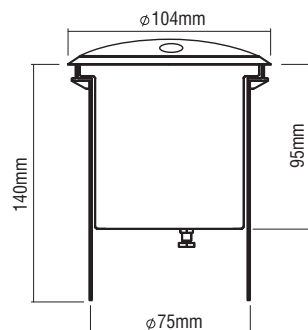


- Inox stainless steel body and trim.
- Tempered protection glass.
- Silicon gasket.
- Thermoplastic housing.
- 230V/50Hz.
- Supplied with 3x0,75mm NEOPRENE 1m cable.
- CRI: min. 80 / SDCM: 3
- Luminous Efficacy:  
7W 4000K 121 Lm/Watt 350mA  
7W 3000K 117 Lm/Watt 350mA

- Roll over weight  max. 1000kg with minimum speed drive 20km/h.

Code	Description	Kg
842375	LITHOS M4 LED 7W IP67 Neutral	0,800
842385	LITHOS M4 LED 7W IP67 Warm	0,800
800036	LED DRIVER 350mA 18W IP67	0,100

## LITHOS M5



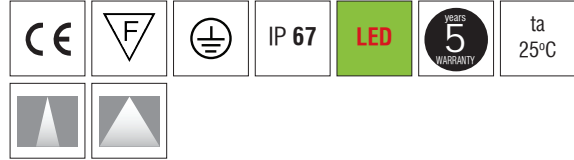
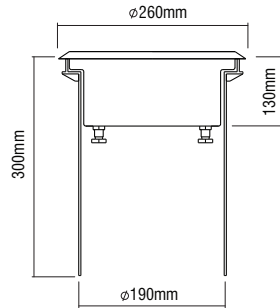
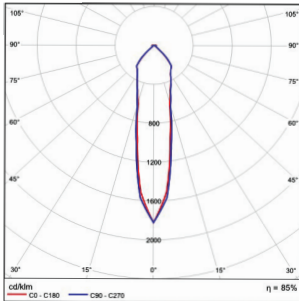
- Inox stainless steel body and trim.
- Tempered protection glass.
- Silicon gasket.
- Thermoplastic housing.
- 230V/50Hz.
- Supplied with 3x0,75mm NEOPRENE 1m cable.
- CRI: min. 80 / SDCM: 3
- Luminous Efficacy:  
7W 4000K 121 Lm/Watt 350mA  
7W 3000K 117 Lm/Watt 350mA

- Roll over weight  max. 1000kg with minimum speed drive 20km/h.

Code	Description	Kg
842395	LITHOS M5 LED 7W IP67 Neutral	0,800
842405	LITHOS M5 LED 7W IP67 Warm	0,800
800036	LED DRIVER 350mA 18W IP67	0,100

## LITHOS

## LITHOS L



- Inox stainless steel body and trim.
- High efficient reflectors in Medium and Wide versions.
- Tempered protection glass.
- Silicon gasket.
- 230V/50Hz.
- Dimmer Phase Cut.
- CRI: min. 80 / SDCM: 3
- Luminous Efficacy:  
15W 4000K 95 Lm/Watt  
15W 3000K 90 Lm/Watt

- Roll over weight  max. 2000kg with minimum speed drive 20km/h.

Code	Description	Kg
84241 ■ ■ 5	LITHOS L LED 15W IP67	4,000

## LED COLOUR CODES:

2 Warm 3 Neutral

## BEAM CODES:

01 spot 02 medium 03 wide

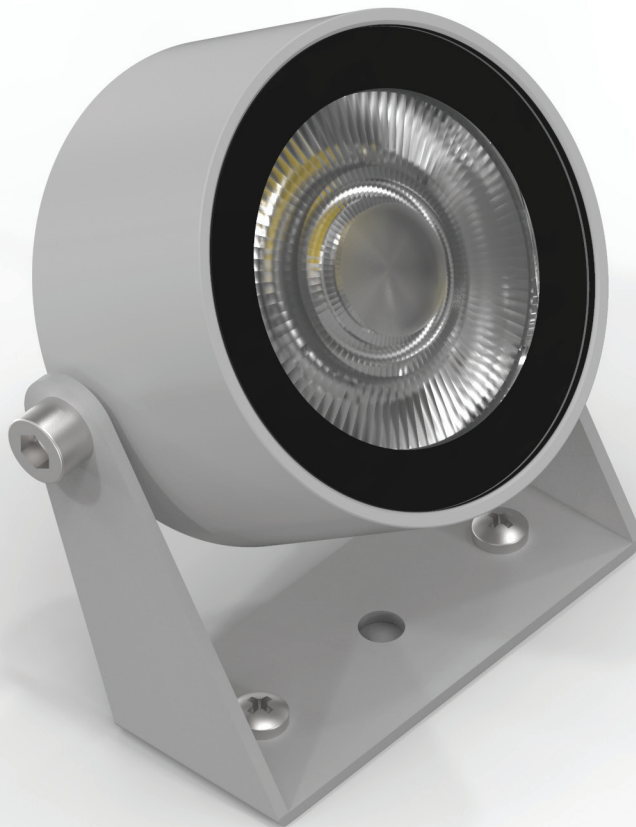


# LITHOS





## PEGASUS



*A floodlight with LED technology and high protection degree (IP65). It is ideal for outdoor lighting and for impressive highlighting of facades.*

### **Technical Features**

- Body from die-cast aluminium, painted electrostatically in selected colour.
- Tempered protection glass 3mm.
- Pure light without IR/UV radiation.
- Operation life: 50,000 hours with efficiency > 80% of the initial luminous flux (L80B10).
- Supplied with 3x1mm NEOPRENE 1,5m cable.

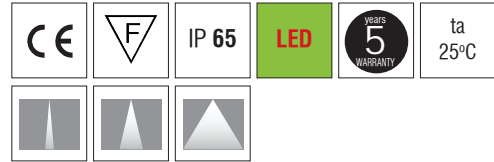
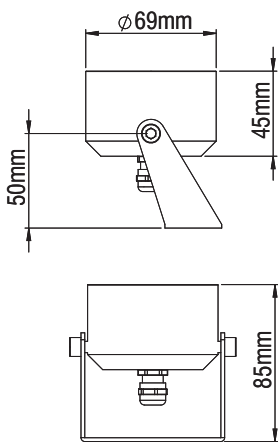
### **Upon request:**

Available with highest colour rendering index (CRI)



# PEGASUS

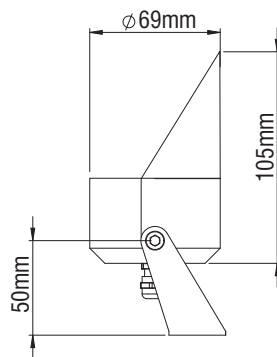
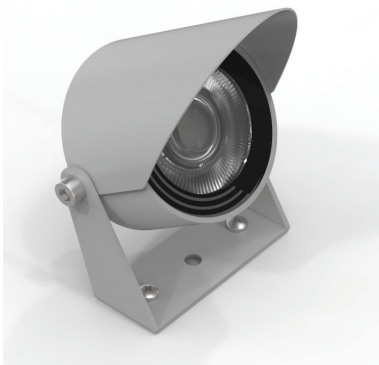
## PEGASUS



- Aluminium body.
- Beams: Spot, Medium, Wide.
- Dimmer Phase Cut.
- Power LED 230V AC/50Hz.
- CRI: min. 80 / SCDM: 3
- Luminous Efficacy:  
4W: 3000 K: 90 Lm/Watt  
4W: 4000 K: 95 Lm/Watt

Code	Description	Kg
84701	PEGASUS 4W IP65	0,150

## PEGASUS Antiglare Accessory



- Aluminium body.

Code	Description	Kg
80471	Antiglare Accessory	0,050

<b>LED COLOUR CODES:</b> 2 Warm 3 Neutral	<b>BEAM CODES:</b> 01 spot 02 medium 03 wide	<b>Colour Codes:</b> 0 Colours 1 White 2 Titan 3 Black
--	---	---

## FOCUS



*A floodlight with LED technology and high protection degree (IP67). It is ideal for outdoor lighting and for impressive highlighting of facades.*

### **Technical Features**

- Body from die-cast aluminium, painted electrostatically in selected colour.
- Beam distribution polycarbonate reflector.
- Tempered protection glass 5mm.
- Silicone sealant.
- Pure light without IR/UV radiation.
- Operation life: 50,000 hours with efficiency > 80% of the initial luminous flux (L80B10).
- Supplied with 3x1mm NEOPRENE 1,5m cable.

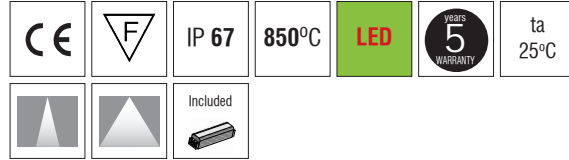
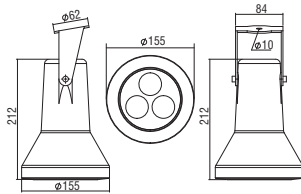
### **Upon request:**

Available with highest colour rendering index (CRI)



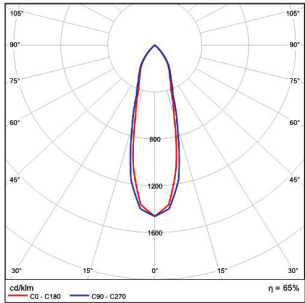
# FOCUS

## FOCUS

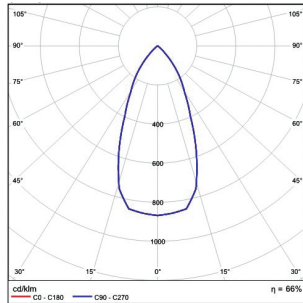


- Beams: Medium, Wide.
- Aluminium body.
- Polycarbonate reflector.
- Tempered protection glass.
- CRI: min. 80 / SDCM: 3
- Luminous Efficacy:  
 37W: 5000 K: 182 Lm/Watt at 350mA  
 37W: 4000 K: 180 Lm/Watt at 350mA  
 37W: 3000 K: 172 Lm/Watt at 350mA

### MEDIUM

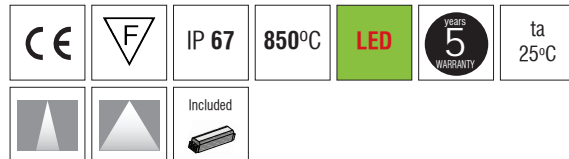
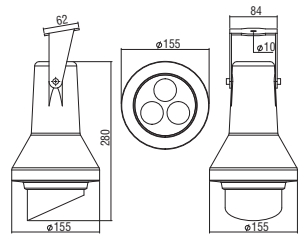


### WIDE



Code	Description	Kg
84727	FOCUS LED 37W	2,700

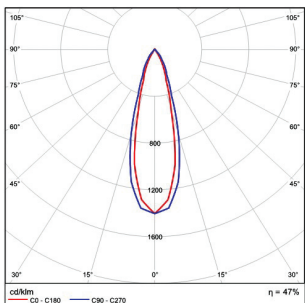
## FOCUS - Antiglare



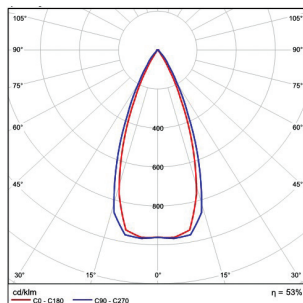
- Beams: Medium, Wide.
- Aluminium body.
- Polycarbonate reflector.
- Tempered protection glass.
- CRI: min. 80 / SDCM: 3
- Luminous Efficacy:  
 37W: 5000 K: 182 Lm/Watt at 350mA  
 37W: 4000 K: 180 Lm/Watt at 350mA  
 37W: 3000 K: 172 Lm/Watt at 350mA

\* For antiglare editions please avoid vertical installation from down to up, to avoid water accumulation on the glass.

### MEDIUM



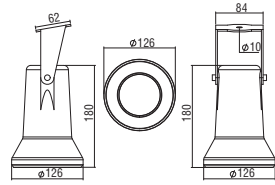
### WIDE



Code	Description	Kg
84747	FOCUS LED 37W (Antiglare)*	3,200

# FOCUS

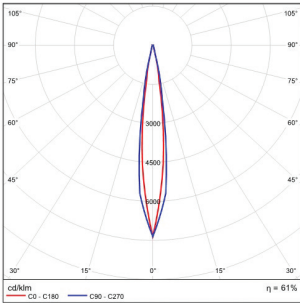
## FOCUS MINI EXTRA SPOT



CE	F	IP 67	850°C	LED	5 YEARS WARRANTY	ta 25°C
included						

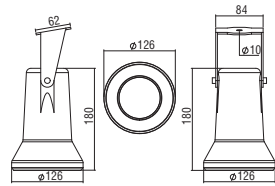
- Beams: Extra Spot (8°).
- Aluminium body.
- Polycarbonate reflector.
- Tempered protection glass.
- CRI: min. 80 / SDCM: 3
- Luminous Efficacy:  
 13W: 5000 K: 150 Lm/Watt at 700mA  
 13W: 4000 K: 137 Lm/Watt at 700mA  
 13W: 3000 K: 132 Lm/Watt at 700mA

EXTRA SPOT



Code	Description	Kg
84705	FOCUS MINI EXTRA SPOT LED 13W Warm	2,300
84706	FOCUS MINI EXTRA SPOT LED 13W Neutral	2,300
84707	FOCUS MINI EXTRA SPOT LED 13W Cool	2,300

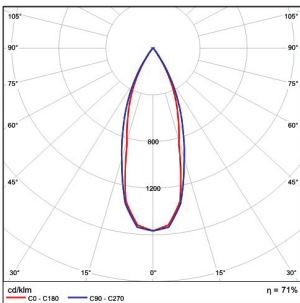
## FOCUS MINI



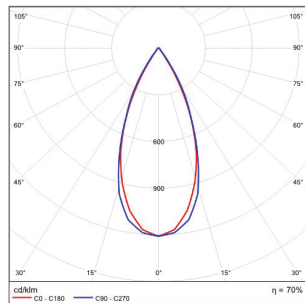
CE	F	IP 67	850°C	LED	5 YEARS WARRANTY	ta 25°C
included						

- Beams: Spot, Wide.
- Aluminium body.
- Polycarbonate reflector.
- Tempered protection glass.
- CRI: min. 80 / SDCM: 3
- Luminous Efficacy:  
 13W: 5000 K: 182 Lm/Watt at 350mA  
 13W: 4000 K: 180 Lm/Watt at 350mA  
 13W: 3000 K: 172 Lm/Watt at 350mA

SPOT



WIDE



Code	Description	Kg
84712	FOCUS MINI LED 13W	2,300

### LED COLOUR CODES:

1 Cool 2 Warm 3 Neutral

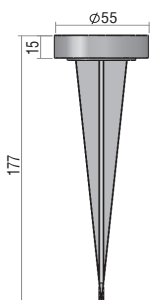
### BEAM CODES:

01 spot 02 medium 03 wide

### Colour Codes:

0 Colours 1 White 2 Titan 3 Black 6 Anthracite

## FOCUS ACCESSORY



- Aluminium picket.

Code	Description	Kg
804605	Picket	0,500



# FOCUS





## AGIS LED

*A tubular luminaire with simple design and a wide light distribution.  
The IP67 protection allows even external use.  
Applicable to light buildings, residential and industrial areas,  
and adaptable to various architectural geometries and creative  
lighting applications.*

### **Technical Features**

- Opal tube in PMMA, in four different lengths.
- Integrated control gear.
- Aluminium end caps with inox cable gland.
- Through wiring 3x0,75mm<sup>2</sup>, external 1m.
- Pure light without IR/UV radiation.
- 120° light beam distribution.
- Operation life: 50,000 hours with efficiency > 80% of the initial luminous flux (L80B10).
- Connection for operation with 230V/50Hz.

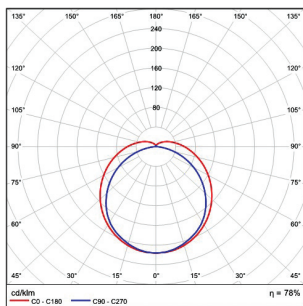
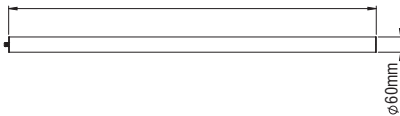


# AGIS LED

## AGIS LED



13,5W 660mm, 19,5W 940mm,  
25W 1220mm, 31W 1500mm

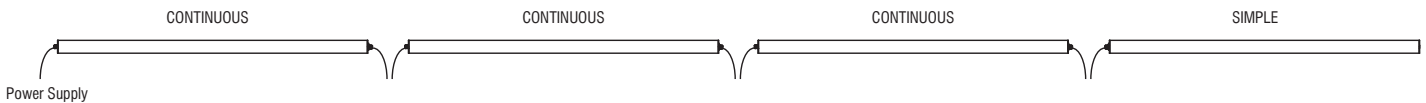


- PMMA body.
- Aluminium end caps.
- Luminous Efficacy:  
145 Lm/Watt at 4000K 250mA  
135 Lm/Watt at 3000K 250mA

Code	Description	LM	Kg
850700	Agis LED 13,5W 0,66m Warm	1990	1,500
850710	Agis LED 13,5W 0,66m Neutral	2170	1,500
850740	Agis LED 19,5W 0,94m Warm	2990	1,850
850750	Agis LED 19,5W 0,94m Neutral	3260	1,850
850780	Agis LED 25W 1,22m Warm	3980	2,200
850790	Agis LED 25W 1,22m Neutral	4340	2,200
850820	Agis LED 31W 1,50m Warm	4980	2,600
850830	Agis LED 31W 1,50m Neutral	5430	2,600
850701	Agis LED 13,5W 0,66m Warm Continuous*	1990	1,500
850711	Agis LED 13,5W 0,66m Neutral Continuous*	2170	1,500
850741	Agis LED 19,5W 0,94m Warm Continuous*	2990	1,850
850751	Agis LED 19,5W 0,94m Neutral Continuous*	3260	1,850
850781	Agis LED 25W 1,22m Warm Continuous*	3980	2,200
850791	Agis LED 25W 1,22m Neutral Continuous*	4340	2,200
850821	Agis LED 31W 1,50m Warm Continuous*	4980	2,600
850831	Agis LED 31W 1,50m Neutral Continuous*	5430	2,600

\* For dimmer version add letter "D" at the end of product code.

\* For making continuous row with AGIS it's necessary to use the simple version as the end part.



## AGIS - ACCESSORIES



Code	Description	Kg
805112	Set for surface mounted installation (set 2 pieces)	0,050
805113	Set for pendant installation 1m. (set 2 pieces)	0,050
801105	Connector 4-pole IP68	0,050

# SLIM 3 LED



*A linear LED luminaire which illuminates facades uniformly and emphasises their surfaces. Although buildings fade over time, the proper lighting can add value to them, highlight their uniqueness and make a lasting impression.*

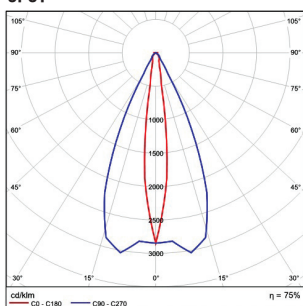
## Technical Features

- Aluminium body.
- Beam distribution lens.
- Safety glass cover.
- Die cast aluminium and caps.
- Silicone sealant.
- Pure light without IR/UV radiation.
- Operation life: 50,000 hours with efficiency > 80% of the initial luminous flux (L80B10).
- Supplied with 3x1mm NEOPRENE 1,5m cable, or 4x0,75mm NEOPRENE for RGB version.

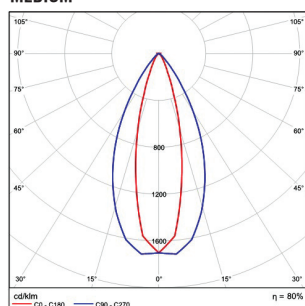
## Upon request:

Available with highest colour rendering index (CRI)

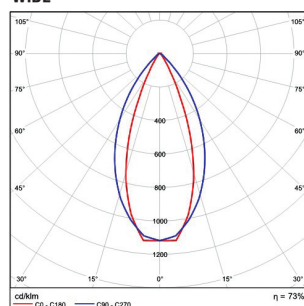
**SPOT**



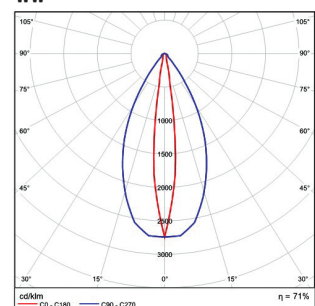
**MEDIUM**



**WIDE**



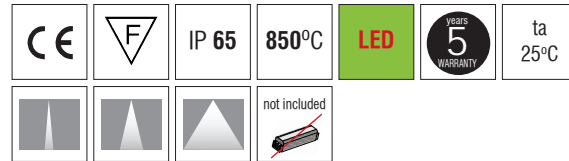
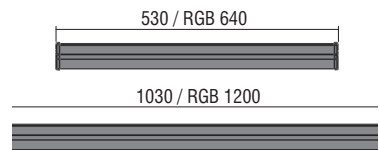
**WW**





# SLIM 3 LED

## SLIM 3 - LED

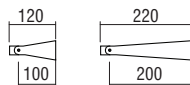


- Beams: Spot, Medium, Wide, WW.
- Aluminium body.
- Glass cover.
- CRI: min. 80 / SDCM: 3
- Luminous Efficacy:  
39W: 6000 K: 135 Lm/Watt  
39W: 4000 K: 131 Lm/Watt  
39W: 3000 K: 123 Lm/Watt

Code	Description	Kg
812111	SLIM 3 LED 0,53m 21W (6-21W) Adjustable (1 driver required)	1,400
812221	SLIM 3 LED 1,03m 39W (14-39W) Adjustable (1 driver required)	1,900

Code	Description	Kg
8121919	SLIM 3 LED 0,64m 10W RGB 24V DC	1,550
8125919	SLIM 3 LED 1,20m 20W RGB 24V DC	2,000

## SLIM 3 - LED ACCESSORIES



- Aluminium brackets.

Code	Description Drivers for Standard Version	Kg
800032	DRIVER CC 700mA 30W IP20	0,250
800013	DRIVER CC 1050mA 45W IP20	0,250
800041	DRIVER CC 350-1050 mA max. 50W IP20	0,300
800042	DRIVER CC 350-1050 mA max. 50W IP20 DALI/1-10VDC	0,300
800029	DRIVER CC 700 mA max. 36W IP67	0,300
800045	DRIVER CC 700 mA max. 65W IP67 (for 2 lum.)	0,600

Code	Description Drivers and Accessories for RGB Version	Kg
800062	DRIVER CV 24V DC max. 90W IP64	0,600
800071	DRIVER CV 24V DC max.30W IP20	0,300
800058	DRIVER CV 24V DC max.150W IP20	0,500
800059	DRIVER CV 24V DC max.350W IP20	0,700
800083	CONTROL UNIT RGB 12/24VDC 216-432W+REMOTE CONTROL	0,300

Code	Description Accessories for All Version	Kg
801101	Set aluminium brackets 10cm	0,300
801102	Set aluminium brackets 20cm	0,400
801105	CONNECTOR 4-POLE IP68	0,050

### Led Colour:

- 1 Cool 2 Warm 3 Neutral

### Beams Codes:

- 1 spot 2 medium 3 wide 4 WW

### Colour Codes:

- 0 Colours 4 Anodized

DRIVER CURRENT	LUMINAIRE WATTAGE 0,53m (6 Led)	LUMINAIRE WATTAGE 1,03m (12 Led)
350 mA	6W	14W
500 mA	13W	22W
700 mA	16W	29W
1050 mA	21W	39W



# SLIM 3 LED



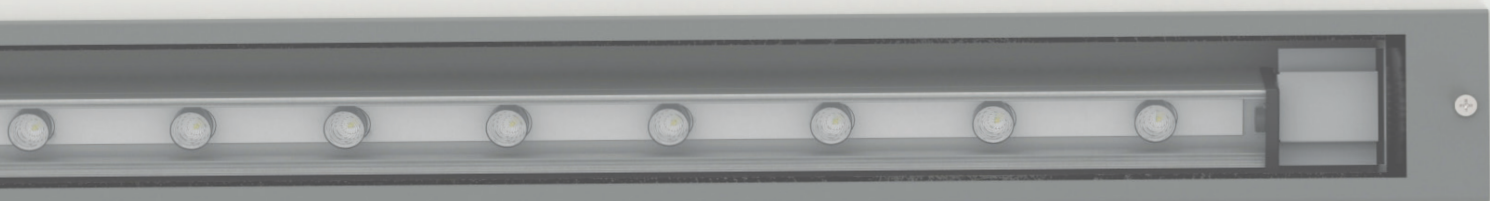


# SLIM 3 LED





## SLIM 3 - LED GROUND



*A linear LED luminaire for floor or wall installation, which illuminates facades uniformly and emphasises their surfaces.*

*Although buildings fade over time, the proper lighting can add value to them, highlight their uniqueness and make a lasting impression.*

### **Technical Features**

- Aluminium body.
- Die cast aluminium closing heads.
- Movable led base for asymmetric light distribution.
- Clear passable by persons glass.
- Silicone sealant.
- Two cable glands at one end.
- Box for installation in metal box - included.
- Pure light without IR/UV radiation.
- Operation life: 50,000 hours with efficiency > 80% of the initial luminous flux (L80B10).
- Supplied with 3x1mm NEOPRENE 1,5m cable.

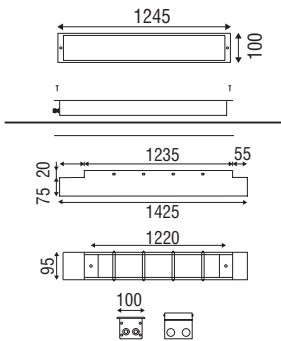
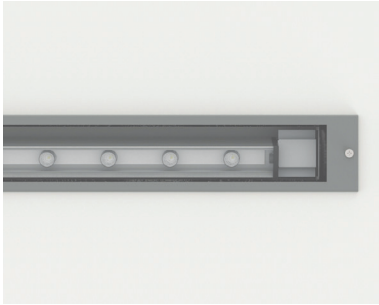
### **Upon request:**

- Available with highest colour rendering index (CRI)
- Available with dali or dim 1-10 VDC driver.



# SLIM 3 - LED GROUND

## SLIM 3 - LED GROUND



CE	F	IP 67	850°C	LED	5 YEARS WARRANTY	ta 25°C
					IK 09	not included

- Beams: Spot, Medium, Wide, WW.
- Aluminium body.
- Glass cover.
- CRI: min. 80 / SDCM: 3
- Luminous Efficacy:  
 39W: 6000 K: 135 Lm/Watt  
 39W: 4000 K: 131 Lm/Watt  
 39W: 3000 K: 123 Lm/Watt

Code	Description	Kg
813221 ■■2	SLIM 3 LED GROUND 1,245m 39W (14-39W) Adjustable (1 driver required)	7,500

## SLIM 3 - LED GROUND ACCESSORIES



Code	Description	Kg
800041	DRIVER CC 350-1050 mA max. 50W IP20	0,300
800042	DRIVER CC 350-1050 mA max. 50W IP20 DALI	0,300
800043	DRIVER CC 350-1050 mA max. 50W IP20 1-10VDC	0,300
800029	DRIVER CC 700 mA max. 36W IP67	0,300
800045	DRIVER CC 700 mA max. 65W IP67 (for 2 lum.)	0,600
801105	CONNECTOR 4-POLE IP68	0,050

**Led Colour:**  
**1** Cool **2** Warm **3** Neutral

**Beams Codes:**  
**1** spot **2** medium **3** wide **4** WW

DRIVER CURRENT	LUMINAIRE WATTAGE
350 mA	14W
500 mA	22W
700 mA	29W
1050 mA	39W

# SLIM 3 - LED GROUND





# SLIM 3 - LED GROUND



## LED LIGHT

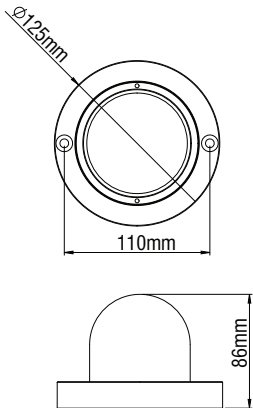
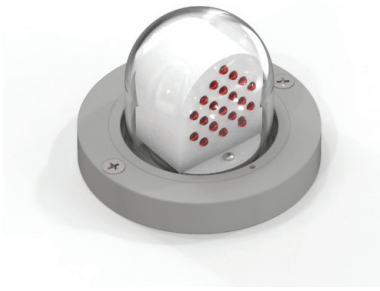


### Technical Features

- LED high brightness type 40 diodes.
- Aluminium body powder coated.
- Cover from PMMA.
- High quality silicon gasket.
- Connection for operation on 12V DC.
- Mounted with screws M6.



# LED LIGHT



CE	F	III	IP 65	850°C	LED	5 YEARS WARRANTY	ta 25°C
IK 06	included						

- Led colour: Red, Green, Blue, Yellow, White.
- LED energy consumption 2W.
- Nominal current 0,05A.
- Power factor 0,5.
- Remote driver dimensions: 38x27x21mm.

Code	Description	Kg
85839	Led Light 2W	0,900

**Colour Codes:**

0 Colours 1 White 2 Titan 3 Black





# LED LIGHT

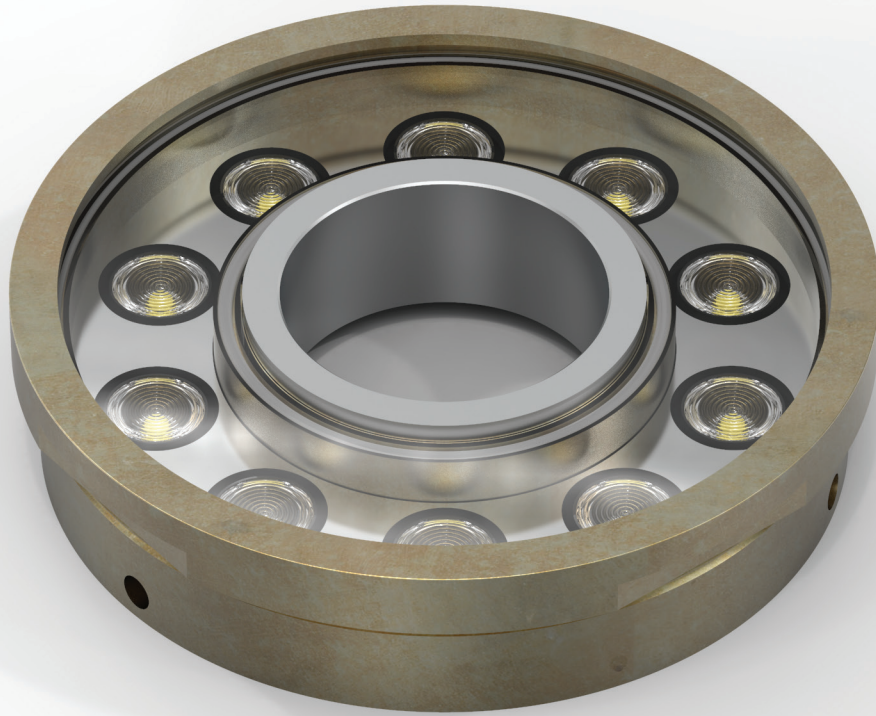




# LED LIGHT



# ARSIS



*ARSIS is a fountain luminaire.  
It is available at two different sizes and upon request  
it can be made in special specifications,  
able to fulfill every need.*

## Technical Features

- Brass body.
- Tempered protection glass.
- Beam distribution lens.
- Silicone sealant.
- Pure light without IR/UV radiation.
- Operation life: 50,000 hours with efficiency > 80% of the initial luminous flux (L80B10).

## Upon request:

Available with highest colour rendering index (CRI)

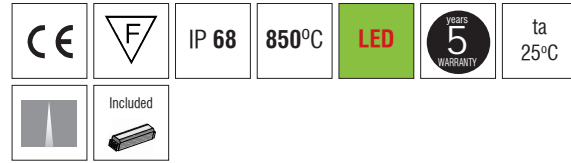
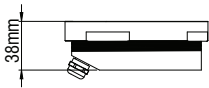
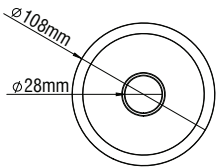
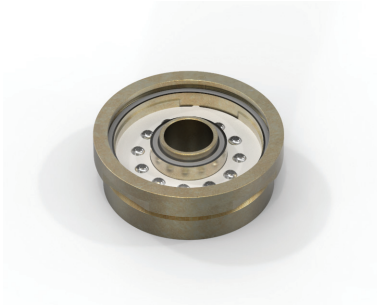


To ensure the degree of protection (sealing), the use of flexible power supply cable type H07RN-F is required.



# ARSIS

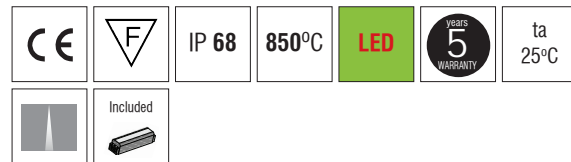
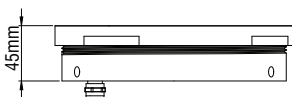
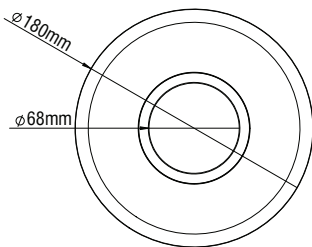
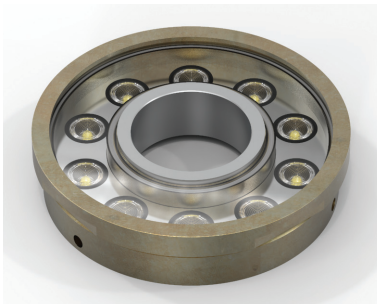
## ARSIS MINI



- Body made form brass.
- Lens in Spot beam.
- LED energy consumption 12W.
- Tempered protection glass.
- Driver out of the body.
- CRI: min. 80 / SDCM: 3
- Luminous Efficacy:  
12W: 4000 K: 107 Lm/Watt  
12W: 3000 K: 100 Lm/Watt

Code	Description	Kg
842980	ARSIS MINI 12W IP68 Warm	1,300
842990	ARSIS MINI 12W IP68 Neutral	1,300

## ARSIS



- Body made form brass.
- Lens in Spot beam.
- LED energy consumption 10W.
- Tempered protection glass.
- Driver out of the body.
- CRI: min. 80 / SDCM: 3
- Luminous Efficacy:  
10W: 4000 K: 107 Lm/Watt  
10W: 3000 K: 100 Lm/Watt

Code	Description	Kg
842960	ARSIS 10W IP68 Warm	3,500
842970	ARSIS 10W IP68 Neutral	3,500

# ARSIS



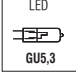

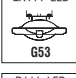
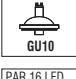


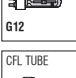
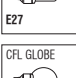
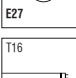
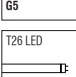
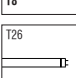













# ARSIS





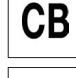

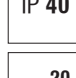
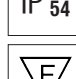


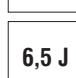


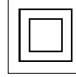


## Lamps

	Led Chip
	Led lamp
	12V Led lamp GU5,3
	Led lamp G9
	12V aluminium reflector lamp Ø111 mm. G53
	Led lamp R111 GU10
	Led lamp PAR16 GU10
	Led lamp PAR30 E27
	Tubular shape lamp G12
	Double twin - tube with integrated electronic ballast E27
	Spherical shape with integrated electronic ballast E27
	Linear Ø16mm G5
	Linear Ø26mm T8 LED
	Linear Ø26mm Fluorescent T8





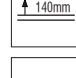

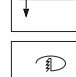
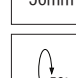


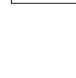
## Distribution Characteristics

	Asymmetrical
	Narrow beam
	Medium beam
	Wide beam
	Extremely wide beam diffuser
	Wallwasher
	Indirect / Direct
	Indirect

## Test Marks

	The CE - mark indicates conformity to the relevant EU guidelines
	European testmark of the EU and EFTA
	IECEE certification
	Test mark Italy
	IP20 - IP67 possible protection according to IEC 60598
	Degree of protection for recessed luminaires
	Flammability
	Flame and Ignitor Resistance
	IK00 - IK10 Resistance against impacts
	Resistance to a shock
	Luminaire must not be covered with thermal insulation
	Protection class I
	Protection class II
	Protection class III

## Others

	Five years guarantee
	Ambient temperature
	Driver included
	Driver not included
	Height without false ceiling material
	Height including false ceiling material
	False ceiling material thickness
	Hole dimension
	Vertical tilt angle
	Horizontal tilt angle
	Type of cable



**DEGREE OF PROTECTION IP** (Norm EN60598-1)

The type of protection is determined by two degrees of protection:

1. Degree of shock-hazard protection and protection against ingress of solid foreign bodies.
2. Degree of protection against the ingress of water.

**1<sup>st</sup> characteristic figure:**


Protection against ingress of solid foreign bodies

- 0 No protection
- 1 Protected against solid objects > 50mm
- 2 Protected against solid objects > 12mm
- 3 Protected against solid objects > 2,5mm
- 4 Protected against solid objects > 1mm
- 5 Dust-proof
- 6 Dust-tight

**2<sup>nd</sup> characteristic figure:**

Protection against the ingress of water

- 0 No protection
- 1 Drip-proof
- 2 Protection against water drops falling up to max.15° from the vertical
- 3 Rainproof - protection up to 60° from the vertical
- 4 Splash - proof
- 5 Jet - proof
- 6 Protection against heavy seas
- 7 Watertight
- 8 Pressure - watertight

 The lighting fittings and their electrical parts are legitimate to be traded and used around Europe bearing the mark ENEC. 18 European notified bodies have signed a convention (ENEC convention approved by CENELEC) and have established the common mark ENEC. ENEC mark certifies the conformance of a product to the European Norms and is considered, by the countries that have signed the convention, as equal to their corresponding national mark (e.g IMQ of Italy, VDE of Germany, etc).

 All luminaires carrying this mark can be fitted on normally flammable surfaces, in compliance with (Norm EN 60598-1). An area is characterized normally flammable when the ignitor temperature is 200°C minimum.

**650°C Flame and Ignitor Resistance**

**850°C** The materials used to make the luminaires carrying this mark have passed the glow-wire test at this temperature (Norm EN 60598-1).

**960°C**

**6,5 J** Luminaires with cover must have a resistance to a shock from an object of 50mm diameter, and 0,51kg weight, which falls from a height of 1,3m (Norm EN 60598-1).

**PROTECTION AGAINST ELECTRIC SHOCKS** (Norm EN60598-1)

The electric devices are divided into four classes according to the type of protection against electric shocks: Class 0, Class I, Class II and Class III.

**Class 0**

Protection against electric shock depends only on the basic insulation. That means, there is no earth protection and in case of basic insulation's failure the protection is based on the environment.

**Symbol:** -

**Class II**

Protection against electric shock depends not only on the basic insulation, but have been foreseen additional safety measures, such as double or re-inforced insulations, while there is no earth conductor.

**Symbol: (obliging)** 

**Class I**

Protection against electric shock depends not only on the basic insulation, but also contains an additional safety measure by connecting the accessible conductive parts to the earth conductor of the installation's wiring, preventing these parts to be under voltage in case of basic insulation's failure.

**Symbol: (optional)** 

**Class III**

Protection against electric shock is based on the fact that the fitting is supplied with safety low voltage and could not be created higher voltages than this one.

A fitting of this class must not be provided with earth protection.

**Symbol: (obliging)** 

**MECHANICAL RESISTANCE**

**Protection against Shocks**

- 0,225 J** Resistance to a shock from an object weighing 150gr which falls from a height of 15cm
- 0,5 J** Resistance to a shock from an object weighing 250gr which falls from a height of 20cm
- 2 J** Resistance to a shock from an object weighing 500gr which falls from a height of 40cm
- 6 J** Resistance to a shock from an object weighing 1,5kg which falls from a height of 40cm
- 20 J** Resistance to a shock from an object weighing 5kg which falls from a height of 40cm

**Code IK** (Norm EN 50102)

- IK02**
- IK04**
- IK07**
- IK08**
- IK10**











[www.petridis-lighting.gr](http://www.petridis-lighting.gr)