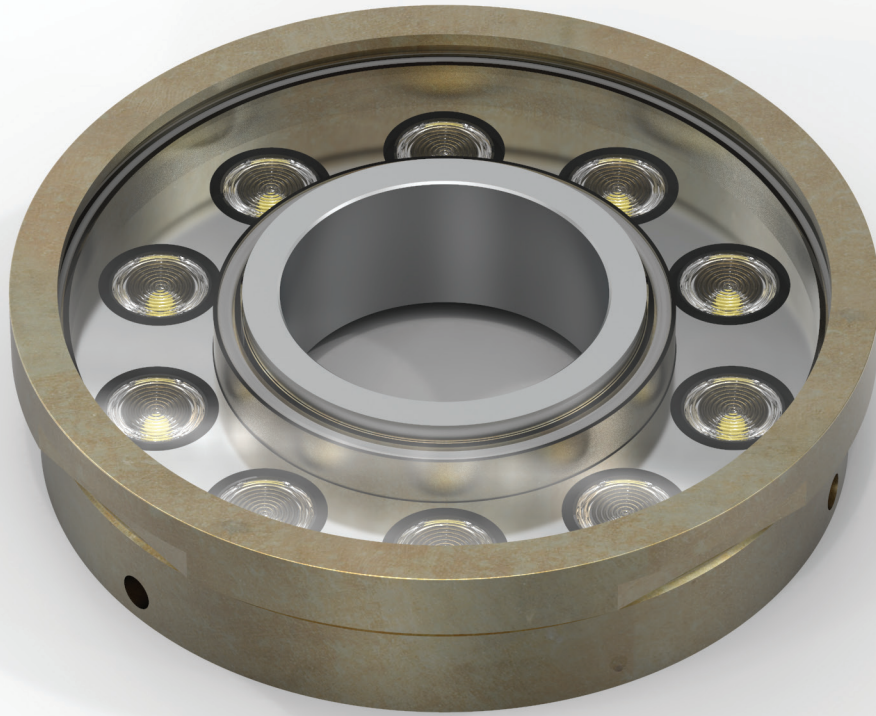


ARSIS



*ARSIS is a fountain luminaire.
It is available at two different sizes and upon request
it can be made in special specifications,
able to fulfill every need.*

Technical Features

- Brass body.
- Tempered protection glass.
- Beam distribution lens.
- Silicone sealant.
- Pure light without IR/UV radiation.
- Operation life: 50,000 hours with efficiency > 80% of the initial luminous flux (L80B10).

Upon request:

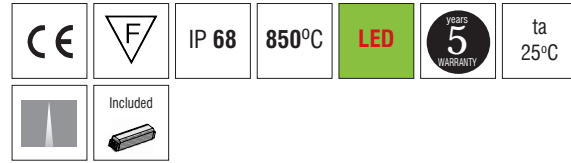
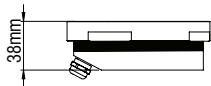
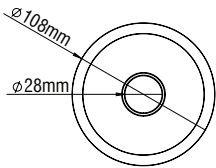
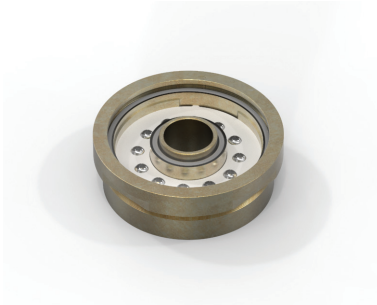
Available with highest colour rendering index (CRI)



HO7RN-F To ensure the degree of protection (sealing), the use of flexible power supply cable type HO7RN-F is required.

ARSIS

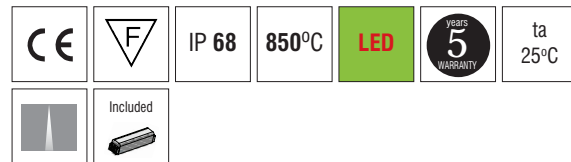
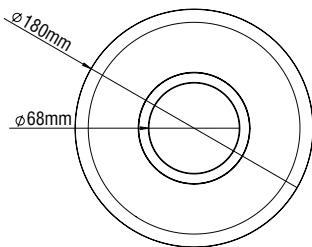
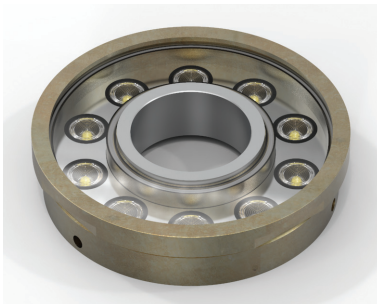
ARSIS MINI



- Body made form brass.
- Lens in Spot beam.
- LED energy consumption 12W.
- Tempered protection glass.
- Driver out of the body.
- CRI: min. 80 / SDCM: 3
- Luminous Efficacy:
12W: 4000 K: 107 Lm/Watt
12W: 3000 K: 100 Lm/Watt

Code	Description	Kg
842980	ARSIS MINI 12W IP68 Warm	1,300
842990	ARSIS MINI 12W IP68 Neutral	1,300

ARSIS



- Body made form brass.
- Lens in Spot beam.
- LED energy consumption 10W.
- Tempered protection glass.
- Driver out of the body.
- CRI: min. 80 / SDCM: 3
- Luminous Efficacy:
10W: 4000 K: 107 Lm/Watt
10W: 3000 K: 100 Lm/Watt

Code	Description	Kg
842960	ARSIS 10W IP68 Warm	3,500
842970	ARSIS 10W IP68 Neutral	3,500

ARSIS



ARSIS

